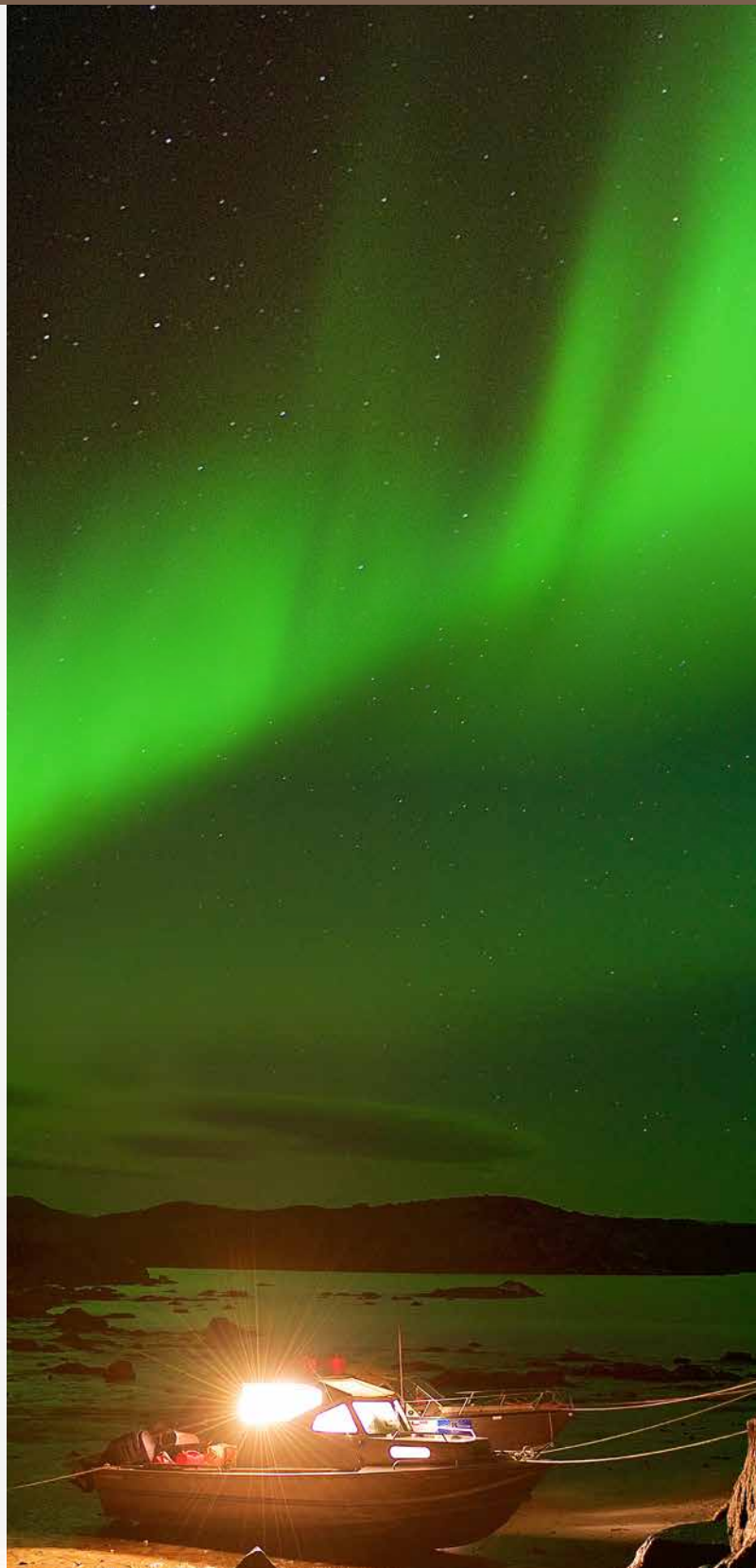




## TABLE OF CONTENTS

Background	3
The Organization Survey	5
What We Heard	6
Respondents	6
Values and Goals	8
Objectives	10
Draft objectives under the value of Nunaqqatigiinniq	11
Draft objectives under the value of Pivaalliqatigiinniq/Makitaniq	13
Draft objectives under the value of Nunamiingaaqniq	15
Draft objectives under the value of Katujjiqatigiinniq	17
On-Going Engagement	19
Additional Comments	20
Additional Feedback Received	23
Nunavik Marine Region Impact Review Board	23
University of Manitoba	24
Government of Quebec	24
Kativik Regional Government	24
Makivvik	26
What's Next?	26
Appendices	27
Appendix 1: Organization Marine Planning Strategy Survey	27
Appendix 2: Letter from the Kativik Regional Government	35
Appendix 3: Letter from Makivvik	40





## BACKGROUND

The Nunavik Marine Region Planning Commission (NMRPC) is an institution of public government created under the Nunavik Inuit Land Claims Agreement (NILCA). The NILCA tasks the NMRPC with developing a Marine Use Plan to guide and direct resource use and development in the Nunavik Marine Region. The Nunavik Marine Region includes the saltwater and islands offshore of Nunavik, excluding the tidal islands connected to the mainland during low tide (Figure 1).

The NMRPC is responsible for creating a Marine Planning Strategy to lay the foundation for the preparation of the Marine Use Plan. The strategy will provide a roadmap for the marine planning process as well as a tool to hold the NMRPC accountable for its work.

As required under the NILCA, the strategy will contain broad planning **goals, objectives,** and **actions** as well as priorities regarding the conservation, development, management, and use of the saltwater, islands, and resources of the Nunavik Marine Region (NILCA 6.2.2(a), 6.4.1(a)) (Figure 2). In addition, the strategy will contain **values** for the marine planning process and, as per the NILCA, devote special attention to protecting and promoting the existing and future wellbeing of Nunavik Inuit (NILCA 6.2.1(b)).

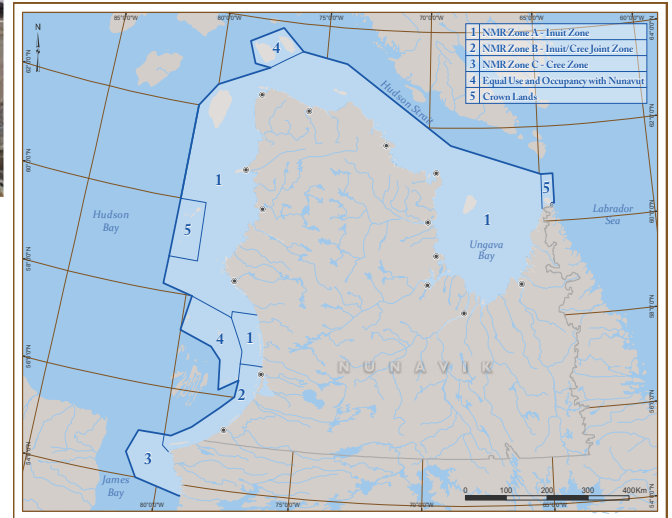


Figure 1: Nunavik Marine Region.

**Values are shared ideals.** They provide guiding principles for decision-making. **Goals are general targets to aim for.** They provide direction. **Objectives are specific targets to be achieved.** They are “what must be done”. **Actions are activities to be completed.** They are “how objectives can be achieved”. Together, these elements establish a framework for strategic, long-term planning that leads to action.

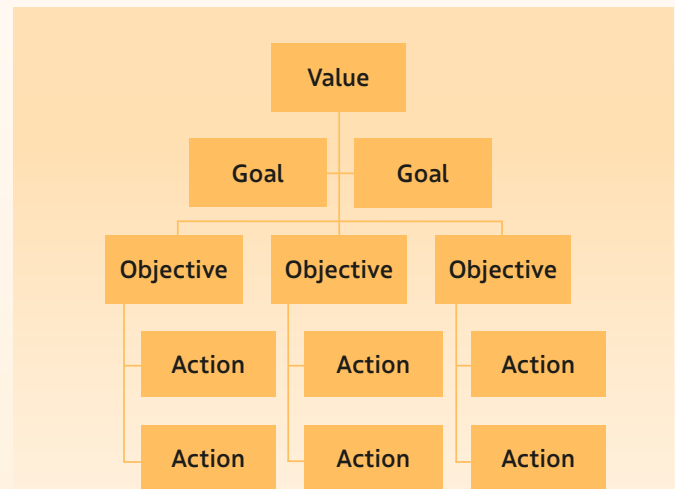


Figure 2: The relationship between values, goals, objectives, and actions.

A broad range of individuals and organizations have activities and/or interests in the Nunavik Marine Region. Early, ongoing, and meaningful engagement is necessary with the full suite of these planning partners to support development of a strategy that is comprehensive, relevant, and achievable. In recognition of this, the NMRPC is co-developing the Marine Planning Strategy with planning partners.

Our engagement on the strategy reached a broad range of planning partners including Nunavimmiut as well as individuals and organizations from across Canada with interests or activities in the Nunavik Marine Region.

This report focuses on the results of the Organization Survey. The purpose of conducting the survey was to:

1. Ensure that relevant organizations were aware of the NMRPC and our role in the marine planning process.
2. Obtain input for the marine planning process from organizations, including those identified by the NMRPC and others identified through the posting of the survey on social media and through sharing of the survey between organizations.
3. Identify opportunities for further engagement with organizations.

Using this survey, we invited input from organizations on draft values, goals, and objectives for the Marine Planning Strategy as well as on the tools that the NMRPC can use to maintain ongoing engagement with planning partners.

The results of the Organization Survey, alongside those of the Targeted and Public Surveys, will directly inform development of the Marine Planning Strategy. The Marine Planning Strategy will reflect the needs and desires of Nunavimmiut and serve as a tool for creating an effective Marine Use Plan.

The following engagement has taken place to date to support co-development:

#### **Early Engagement Community Tour (2023):**

We conducted a tour to introduce the NMRPC to Nunavik communities, including Inuit in Chisasibi, and hear their opinions on the Nunavik Marine Region.

**Marine Planning Strategy Surveys (2024-2025):** We used surveys to validate draft content for the strategy. We used the feedback received during the 2023 community tour to develop the surveys.

- **Targeted Survey** – We delivered a Targeted Survey in-person to experts in the marine environment, with a focus on Nunavik harvesters and Elders.<sup>1</sup>
- **Public Survey** – We provided a Public Survey to all Nunavik Inuit, Nunavimmiut, and others from across Canada interested in the Nunavik Marine Region.<sup>2</sup>
- **Organization Survey** – We shared an Organization Survey with a broad range of agencies from across Canada with activities or interests in the Nunavik Marine Region, including land claims organizations, industry and businesses, government, academia, and non-governmental organizations.

#### **Wellbeing Workshop Community Tour (2025):**

We conducted a community tour to all Nunavik communities, including Inuit in Chisasibi, to explore the concept of wellbeing with Nunavimmiut.<sup>3</sup> We invited Nunavimmiut to share their knowledge, experience, and perspectives on marine planning in the Nunavik Marine Region.

<sup>1</sup> Nunavik Marine Region Planning Commission. 2024. Marine Planning Strategy: Targeted Survey 2024 for Local Experts from Nunavik Communities.

<sup>2</sup> Nunavik Marine Region Planning Commission. 2025. Public Marine Planning Strategy Report.

<sup>3</sup> Nunavik Marine Region Planning Commission. 2025. Wellbeing Workshops with Nunavimmiut Report.

Available online at <https://nmrpc.ca>.

# THE ORGANIZATION SURVEY

The NMRPC launched the Organization Survey in spring 2025 in English, Inuktitut, and French (see Appendix 1 for survey questions). We sent an email invitation to complete the survey to our internal distribution list of organizations with interests, activities, or responsibilities in the Nunavik Marine Region. The email included an attached cover letter explaining the purpose of the survey; the NMRPC's Engagement Plan containing background information on the NMRPC and marine planning in the Nunavik Marine Region as well as a timeline for ongoing engagement; and PDF versions of the survey in all three languages. A link to complete the survey online using the Survey Monkey platform was provided in the email. We also sent a follow up personalized email to key contacts if there was a notable history of engagement with them.

We promoted participation in the survey through social media posts, which were cross posted by ArcticNet, Nunavik Tourism, and seven individuals on their Facebook pages. We sent reminder emails to all contacts prior to the initial deadline of June 30, 2025, as well as personalized emails to planning partners identified as high priority for engagement due to their direct roles and/or responsibilities in the Nunavik Marine Region. For planning

partners seeking more context for the survey and our work, we offered meetings and phone calls prior to their completion of the survey. As a result, we held meetings with the Kativik Regional Government, Makivik, the Eeyou Marine Region Planning Commission, and the Nunavik Marine Region Wildlife Board. We extended the survey deadline to August 29, 2025 to accommodate summer holidays and fieldwork seasons, ensuring all organizations had the opportunity to respond. Four surveys were submitted in September which we have also included in this report.

Some organizations did not respond. This was not seen as a lack of interest in our work or the purpose of the survey, but instead a result of capacity constraints, the time of year the survey was launched, or a preference for reviewing the draft Marine Planning Strategy instead of doing a survey. We also recognize that marine planning may be new to many organizations, resulting in lack of clarity around how planning in the Nunavik Marine Region is relevant to their mandates and operations. We will maintain ongoing engagement across different platforms to foster increased knowledge and awareness of our work and the planning process with organizations.





PHOTO: FELIX WILLIE

## WHAT WE HEARD

### Respondents

A total of 58 organizations completed surveys<sup>4</sup>, with 40 completed online using the Survey Monkey platform and 18 completed in fillable PDFs that were entered online by NMRPC staff. Three of the organizations that responded to the survey had two different members of their organization submit separate survey responses. This was beneficial because we obtained different perspectives from within the same organization. Five organizations provided feedback using methods other than the survey, either in the form of a letter or email correspondence. This feedback will be addressed separately from that of the survey responses. Of these organizations, two also filled out the survey.

We asked respondents to identify their organization type and invited them to select multiple options. Table 1 lists the organizations according to the organization type(s) that they selected in the survey demonstrating the broad range of respondent organizations.

Inuit organizations made up the largest percentage of respondent organizations (28%) with most of the rest of respondent organizations being comprised of government (26%), academia and research (21%), and non-governmental organizations (21%). Organizations that listed themselves as “Other” included provincial government, a co-management board, and a marine wildlife organization. The option for “Regional Government” was the only choice that no organization selected.

<sup>4</sup> An answer to every question was not necessary for a survey to be considered complete as analysis for each question was conducted separately. Respondents needed to either submit a filled in PDF survey via email or proceed to the end of the Survey Monkey survey and submit a response for their survey to be considered complete.

**Table 1: Survey respondent organizations listed by the organization type they selected.**

Inuit Organizations	Government
<ul style="list-style-type: none"> <li>• Nunavik Regional Board of Health and Social Services</li> <li>• Arctic Eider Society</li> <li>• Nunavut Tunngavik Incorporated</li> <li>• Anguvigaq of Umiujaq</li> <li>• Avataq Cultural Institute</li> <li>• Qikiqtaaluk Environmental Inc.</li> <li>• Nunatsiavut Group of Companies</li> <li>• Nunavut Inuit Wildlife Secretariat</li> <li>• Qarjuit Youth Council</li> <li>• Qikiqtaaluk Corporation</li> <li>• Annituvik Landholding</li> <li>• Niqliit Wildlife Committee</li> <li>• Qikiqtani Inuit Association</li> <li>• Northern Village Umiujaq</li> <li>• Makkovik Inuit Community Government</li> </ul>	<ul style="list-style-type: none"> <li>• Natural Resources Canada (Geological Survey of Canada)</li> <li>• Canadian Coast Guard Arctic Region</li> <li>• Fisheries and Oceans Canada</li> <li>• Royal Canadian Navy</li> <li>• Canada Centre for Mapping and Earth Observation, Natural Resources Canada</li> <li>• Environment and Climate Change Canada</li> <li>• Northern Village Umiujaq</li> <li>• Makkovik Inuit Community Government</li> <li>• Nunavut Research Institute</li> <li>• Government of Nunavut</li> <li>• Northern Coop Inukjuak</li> <li>• Northern Village of Puvirnituq</li> </ul>
Business or Industry	Academia and Research
<ul style="list-style-type: none"> <li>• Crenuk Studio Photography</li> <li>• Raglan Mine</li> <li>• Nunatsiavut Group of Companies</li> <li>• Adventure Canada</li> <li>• JASCO Applied Sciences</li> <li>• Baffinland Iron Mines</li> <li>• Northern Coalition Corporation</li> <li>• F. K. Warren Ltd.</li> <li>• Association of Arctic Expedition Cruise Operators (AECO)</li> <li>• EYOS Expeditions</li> </ul>	<ul style="list-style-type: none"> <li>• Institut nordique du Québec</li> <li>• University of Manitoba</li> <li>• McGill University</li> <li>• Canada Centre for Mapping and Earth Observation, Natural Resources Canada</li> <li>• University of Ottawa</li> <li>• Université de Sherbrooke</li> <li>• Nunavut Research Institute</li> <li>• Ocean Frontier Institute OFI</li> <li>• Avataq Cultural Institute</li> <li>• Chisasibi Eeyou Resource and Research Institute</li> <li>• Atanniuvik</li> </ul>
Non-Governmental Organizations	Institution of Public Government
<ul style="list-style-type: none"> <li>• World Wildlife Fund – Canada</li> <li>• Amundsen Science</li> <li>• Oceans North</li> <li>• Arctic Eider Society</li> <li>• Arctic Youth Network – Oceans Working Group</li> <li>• EYOS Expeditions</li> <li>• KNet</li> <li>• Association of Arctic Expedition Cruise Operators (AECO)</li> <li>• Avataq Cultural Institute</li> <li>• Qarjuit Youth Council</li> <li>• Travel Nunavut</li> <li>• Eeyou Marine Region Planning Commission</li> </ul>	<ul style="list-style-type: none"> <li>• Nunavut Planning Commission</li> <li>• Nunavut Impact Review Board</li> <li>• Northern Village Umiujaq</li> </ul> <div data-bbox="833 1520 1471 1577" style="background-color: #1a3d4d; color: white; padding: 2px;"><b>Other</b></div> <ul style="list-style-type: none"> <li>• Amundsen Science</li> <li>• Torngat Wildlife Plants and Fisheries Secretariat</li> <li>• Secrétariat aux relations avec les Premières Nations et les Inuit (SRPNI)</li> <li>• Anguvigaq of Umiujaq</li> <li>• Travel Nunavut</li> <li>• Niskamoon Corporation</li> </ul>

## Values and Goals

The NMRPC's organizational values and goals were adopted following an internal workshop with Board Members and staff in 2022 (opposite page). We asked survey respondents to review the values and goals adopted by the NMRPC and indicate whether they were a good fit for guiding the marine planning process in the Nunavik Marine Region.

### VALUES

**Ninety-five percent (95%) of respondents that answered this question in the survey (53/56) indicated that the NMRPC's values were a good fit for the marine planning process in the Nunavik Marine Region.**

Of the two respondents who did not answer this question, one respondent specified that they did not feel that they were in a position to comment on the values, while the other did not indicate why they did not provide a response. Two respondents who agreed that the values were a good fit also indicated that "water" or the "marine environment" should be included. Other comments from respondents who agreed the values were a good fit included ensuring that the English and Inuktitut spelling of the values matched, the identification of Katujjiqatigiinniq as a value that resonates with their organization, and an organization that expressed interest in the alignment of the NMRPC's goals and objectives with its own.

We asked the three respondents who did not fully agree with the values to provide additional feedback. Of those three respondents, one suggested that there should be more values but did not indicate what those values would be; another noted that the values should explicitly include the words "youth", "marine spaces", and "marine wildlife"; and the third recommended that "water" or the "marine environment" should be more clearly stated in the values.

### GOALS

**When we asked if respondents agreed that the NMRPC's goals were a good overall fit for marine planning in the Nunavik Marine Region, all but one respondent indicated "yes" (55/56).**

The respondent who did not fully agree that the goals were a good overall fit stated that youth needed to be explicitly included under the "Integrity & Inclusion" goal and that stronger language was needed when discussing environmental sustainability.

Other comments from respondents included incorporating access to country food and local community food initiatives in the goals; highlighting the importance of Inuit values and practices in land stewardship; including traditional economies under the "Healthy Economy" goal; and including housing, healthcare, justice, social services, and food security in the goal related to community instead of the goal related to economy.



## NMRPC Values and Goals

### Nunaqqatigiinni

The people of Nunavik are defined by their relationships with each other.

#### Healthy People and Community:

- Promote and protect culture, language, tradition, places of importance, and the uniqueness of Nunavik communities and their institutions.
- Foster community growth by being open, welcoming, and inclusive.



### Pivaalliqatigiinni/Makitaniq

The people of Nunavik grow and prosper together.

#### Healthy Economy:

- Economic opportunities and meeting the needs of the community contribute to the wellbeing of Nunavimmiut.
- Infrastructure, including transportation and communication, contribute to the aspirations and wellbeing of Nunavimmiut.
- A healthy economy that not only meets, but exceeds, the basic needs of Nunavimmiut (housing, healthcare, justice, social services, food security).



### Nunamiingaaqniq

The people of Nunavik, their way of life comes from the land and their relationship with the land.

#### Healthy Environment and Healthy Ecosystems:

- Promote and support traditional economies, alternative energy, and ecofriendly practices for the holistic wellbeing of Nunavimmiut and Nunavik.
- Consider the sustainability of the environment and the integrity of ecosystems in all plans and activities.



### Katujjiqatigiinni

Working together and collaboratively to find ways forward.

#### Integrity & Inclusion:

- Nunavimmiut and planning partners feel included and are engaged in the planning process, the implementation of the plan, validation of results, and the measuring of success.

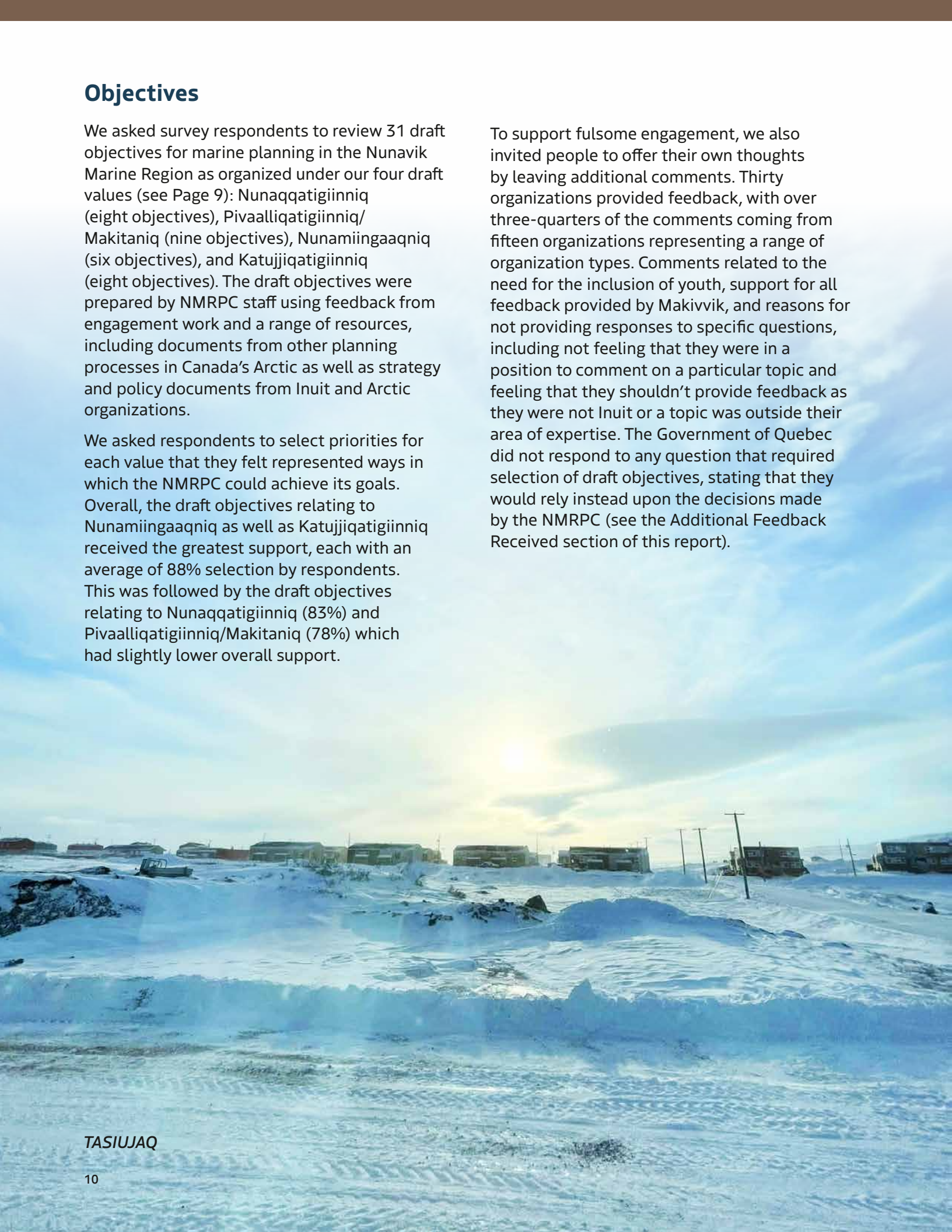


## Objectives

We asked survey respondents to review 31 draft objectives for marine planning in the Nunavik Marine Region as organized under our four draft values (see Page 9): Nunaqqatigiinniq (eight objectives), Pivaalliqatigiinniq/Makitaniq (nine objectives), Nunamiingaaqniq (six objectives), and Katujjiqatigiinniq (eight objectives). The draft objectives were prepared by NMRPC staff using feedback from engagement work and a range of resources, including documents from other planning processes in Canada's Arctic as well as strategy and policy documents from Inuit and Arctic organizations.

We asked respondents to select priorities for each value that they felt represented ways in which the NMRPC could achieve its goals. Overall, the draft objectives relating to Nunamiingaaqniq as well as Katujjiqatigiinniq received the greatest support, each with an average of 88% selection by respondents. This was followed by the draft objectives relating to Nunaqqatigiinniq (83%) and Pivaalliqatigiinniq/Makitaniq (78%) which had slightly lower overall support.

To support fulsome engagement, we also invited people to offer their own thoughts by leaving additional comments. Thirty organizations provided feedback, with over three-quarters of the comments coming from fifteen organizations representing a range of organization types. Comments related to the need for the inclusion of youth, support for all feedback provided by Makivvik, and reasons for not providing responses to specific questions, including not feeling that they were in a position to comment on a particular topic and feeling that they shouldn't provide feedback as they were not Inuit or a topic was outside their area of expertise. The Government of Quebec did not respond to any question that required selection of draft objectives, stating that they would rely instead upon the decisions made by the NMRPC (see the Additional Feedback Received section of this report).



## DRAFT OBJECTIVES UNDER THE VALUE OF NUNAQQATIGIINNIQ

We asked respondents to identify which of the eight draft objectives can help promote and protect Inuit culture. Two respondents indicated that they did not answer this question as they felt they were not in a position to comment on Inuit culture with one respondent stating that they would defer to Nunavik organizations on this topic. A third respondent who did not answer this question did not provide any information as to their lack of response. Each of the eight objectives received a high selection rate of at least 75% or greater from the 55 respondents to this question (Figure 3). The draft objectives that received the greatest support (selection by 87% of respondents) included “Respect and promote Inuit Qaujimagatuqangit”, “Respect and protect the Inuit language”, and “Support opportunities to practice and share culturally important traditions, sites, and artifacts”. Additional feedback was provided by respondents on how



*“Promote a vibrant and sustainable local harvesting economy in recognition of a growing population and a changing climate.”*

the NMRPC can further protect and promote Inuit culture. One respondent noted that all the draft objectives were good priorities but questioned if they fell within the NMRPC’s mandate.

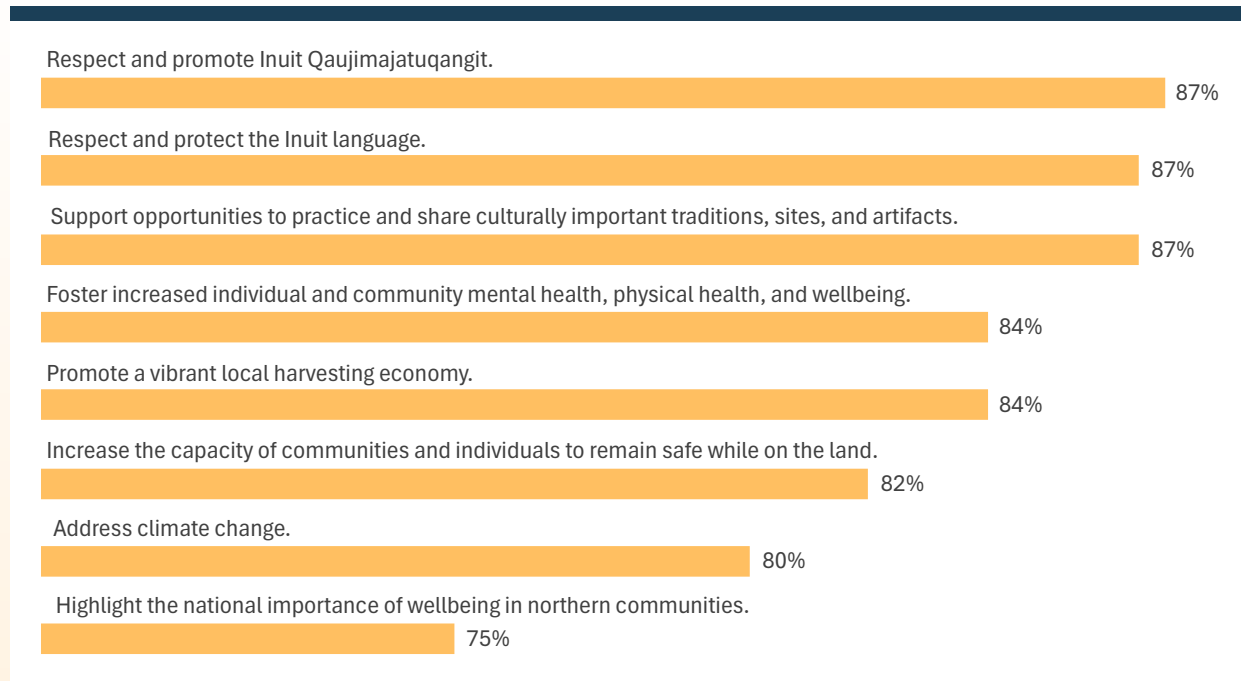


Figure 3: Percentage of respondents who confirmed their agreement with draft objectives to help promote and protect Inuit culture. Respondents were invited to select multiple options.

Six themes emerged from the comments provided:

**Theme 1: Ensure there is coordination and engagement with Nunavik Inuit as well as adjacent Indigenous groups**

- *Coordination with neighbouring jurisdictions such as Sanikiluaq and James Bay Cree.*
- *There are many ways to reach your people, like internet, radio, pamphlets, simple surveys, posters, meetings with organizations individually...*
- *Nunavik Marine Region includes Cree, yet I don't see this reflected here.*

**Theme 2: Identify and protect important areas and habitats**

- *Identify and protect important habitat for subsistence resources and areas with cultural significance and use.*
- *Need to emphasize the important role NMRPC plays both in protecting the marine environment from disruptive, disrespectful or harmful activities that could impact Nunavimmiut...*

**Theme 3: Support Inuit leadership and rights of Inuit to sovereignty and self-determination**

- *Advancing Inuit self-determination, Inuit rights and Inuit priorities could be better emphasized.*
- *Promoting the sovereignty of the north for Inuit and Canada as a free nation.*
- *These are good priorities. The only one I have reservations about is the last one. I do agree with the idea that increased wellbeing supports greater self-determination, but I am not sure it is a planning objective.*
- *Support and encourage the leadership of northern communities in environmental management.*
- *Protect Inuit and Arctic sovereignty.*

**Theme 4: Support research that is collaborative, sustainable, and Inuit-led**

- *Support research and science that supports environmental, economic, and cultural sustainability.*
- *Promote research by Inuit, for Inuit and in collaboration with Inuit (with non-Inuit partners) to stimulate interest in scientific research,*

*particularly in the field of terrestrial and marine fauna (land and marine mammals, birds) and on both hunted and non-hunted species.*

- *Beyond all the actions that can be undertaken locally or regionally, [our organization] can collaborate through joint research endeavours or by engaging in think tanks on possible adaptation strategies with regards to climate change.*

**Theme 5: Encourage economic development that is sustainable and culturally appropriate**

- *One key priority in addition to the above listed priorities must be to generate private sector income opportunities for Nunavimmiut – emphasizing and supporting ecologically sustainable options such as becoming expedition vessel guides, providing services for a fee in communities, having the opportunity to sell artwork directly to visiting expedition guests, etc. By embracing sustainable development options like expedition vessel community visits, Inuit culture is continually reinforced and celebrated.*
- *Promote a vibrant and sustainable local harvesting economy in recognition to a growing population and a changing climate.*

**Theme 6: Respect and uphold Inuit knowledge, language, and culture**

- *Offer cultural practices & language mentorship programs between elders and youth*
- *Respect and promote Inuit Qaujimagatuqangit (IQ) – IQ has been developed in Nunavut. Nunavik has its own health model – IQI – that would be relevant to use instead.*
- *Land names in inuttitut. Many more.*
- *And like each Nunavik animals to highlight once in a while, what they eat, where they stay, which animals try to prey them, their values as Inuit consumption and clothing.*
- *If young generations lose their connection to traditional culture, knowledge, and language, conservation efforts usually tend to be futile. This initiative is a great opportunity to proactively include the voices and interests of youth. It can also serve to acknowledge the role which the youth play in fighting for a liveable future, driving change, and making current systems better.*

## DRAFT OBJECTIVES UNDER THE VALUE OF PIVAALLIQATIGIINNIQ/MAKITANIQ

We asked respondents to identify which of the nine draft objectives can support a strong coastal economy in Nunavik.

Respondents indicated high support for the objectives of “Focus on sustainable economic development” (88%) and “Understand the economic priorities of Nunavik Inuit and communities” (86%) (Figure 4). The objective “Remove unnecessary barriers to development” received the lowest support at 63%.

Survey respondents offered comments in response to the request for input on how the NMRPC can support a strong coastal economy in the Nunavik Marine Region. Similar to the draft objectives for Inuit culture described above, two respondents indicated that we should ensure that all draft objectives are within the mandate of the NMRPC.



*“Ensure Inuit participation and decision making in economic processes and development.”*



Figure 4: Percentage of respondents who confirmed their agreement with draft objectives to support a strong coastal economy. Respondents were invited to select multiple options.

Four themes emerged from the comments provided:

### **Theme 1: Increase economic prosperity by providing local educational and employment opportunities for Nunavik Inuit**

- *We would like to highlight the need for educational and employment opportunities which remain in the coastal communities and are not affected by southward economic leakage.*
- *“Promote increased employment success of the local population” I think the action is more appropriate as the objective.*
- *“Promote increased educational success of the local population” is to me beyond the scope of a land use plan.*
- *[Our organization] has a proven track record in training up individuals from the communities we visit and providing meaningful employment opportunities as part of our expedition teams. We support different economic development initiatives for youth and also support many NGOs with donations and other types of in-kind contributions.*

### **Theme 2: Collaborate with planning partners such as Inuit and industry to strengthen the economy**

- *Could it be a possibility to also work collaboratively with industry to achieve these goals?*
- *I have always been encouraged when I could pursue direction through discussion and consensus (Aajiiqatigiinniq?).*
- *Recognize the variety of Inuit traditional economies. Ensure Inuit participation and decision making in economic processes and development.*

### **Theme 3: Encourage marine infrastructure and transportation that support development while also prioritizing safety for people and wildlife**

- *Building port infrastructure in the region that can support development.*
- *Establish monitored safe shipping corridors to protect harvesting area, migrating species, etc. (e.g. monitoring could include hydrophones for ship noise).*
- *“Manage marine transportation routes to avoid conflicts”, which is a good objective, does not correspond with the example action, especially supporting access to transportation infrastructure, which would be an objective in its own right.*

### **Theme 4: Exercise caution in framing of economic objectives to avoid bias toward development interests**

- *The dismantling of barriers to development is happening all over the country at the expense of environmental conservation and indigenous history. Removing ‘unnecessary’ barriers is subjective, and more likely leans towards the interests of the developers.*
- *Caution: some as written may be “bias” i.e., perception towards full support development.*
- *I think these are good overall, but I have some reservations about some of them. “Remove unnecessary barriers to development” does not make sense in the current planning context in the [Nunavik Marine Region] (and [Eeyou Marine Region]) because there are no development requirements beyond federal and terrestrial legislation. I understand the objective is related to the creation of development requirements, but it should be stated another way.*

## DRAFT OBJECTIVES UNDER THE VALUE OF NUNAMIINGAAQNIQ

Fifty-five respondents provided input on how the NMRPC can protect the health of the environment and ecosystems in the Nunavik Marine Region (Figure 5). The most highly selected of the six objectives in this section was “Understand the current state of the environment and support monitoring” (95%), followed by “Protect and conserve special marine areas and species” (93%).

This indicates that the health of the environment is an important consideration for almost all organizations that responded to the survey. It is worth noting that a research institute and an academic organization both did not select the objective to support research relevant to Nunavik communities.

Additional comments regarding how the NMRPC can protect the health of the environment and ecosystems were provided by respondents.



*“Support the establishment of protected areas to ensure the protection of important and sensitive environments, both culturally and ecologically.”*

One respondent noted that the environmental health objectives seemed to align better with the NMRPC’s mandate than the preceding economic objectives.

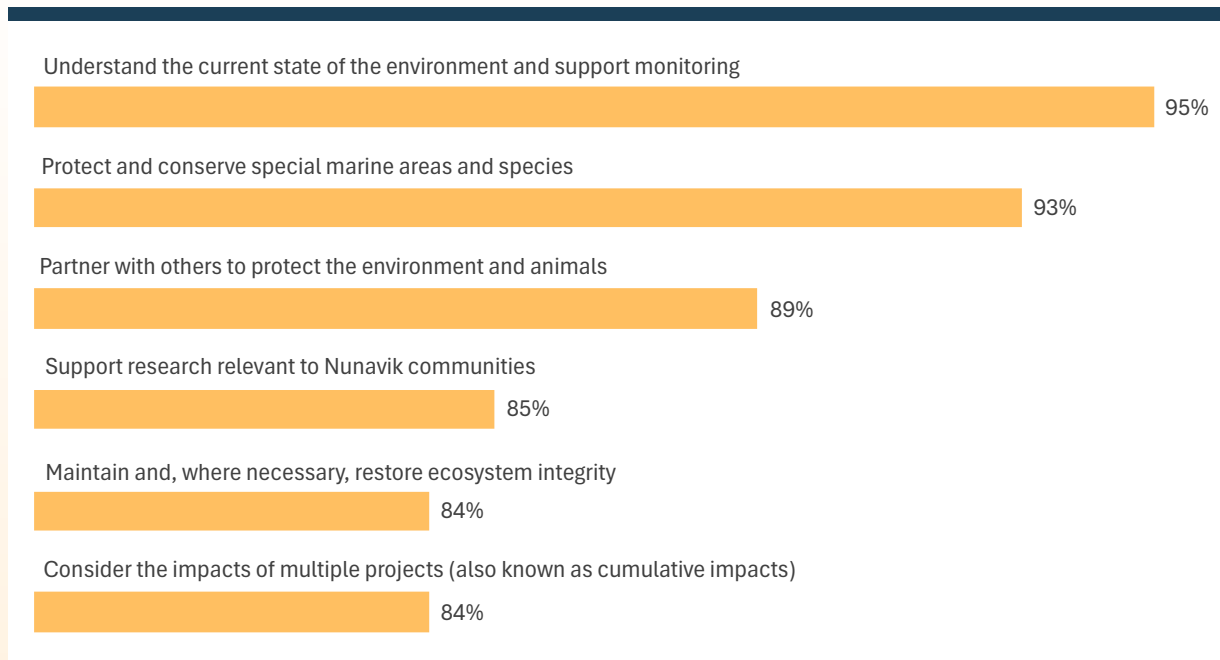


Figure 5: Percentage of respondents who confirmed their agreement with draft objectives to protect the health of the environment and ecosystems in the Nunavik Marine Region. Respondents were invited to select multiple options.

Four themes emerged from the comments provided:

### **Theme 1: Maintain clear internal processes for proponents and support external processes that safeguard environmental health**

- *Thank you for protecting the Nunavik Marine Region with a clear process for proposed projects and requiring a safe and proper marine survey through your area.*
- *Support Inuit communities to establish good Impact and Benefits Agreements and Environmental Assessments with Industry before development begins.*
- *Support the establishment of protected areas to ensure the protection of important and sensitive environments, both culturally and ecologically.*
- *In the Arctic, the marine ecosystems are critical to a healthy environment as well as healthy coastal communities, by extension. All economic development should be evaluated against its likely and potential effects on the marine environment. We seek to remind anyone involved in marine spatial planning initiatives that the ocean is not just a resource to be managed by humans but that it is a collection of intricately linked actors.*

### **Theme 2: Integrate Inuit knowledge and values in all environmental protection planning**

- *Utilize technology and capacity to use scientific tools through IQ lens.*
- *Ensure protection and conservation align with Nunavik Inuit priorities. Ensure protection and conservation initiatives are Inuit-led and co-governed.*
- *Centre Inuit environmental values.*

### **Theme 3: Increase Coast Guard presence**

- *Demand a higher Canadian Coast Guard presence in the region year around to assert sovereignty and for marine safety.*

### **Theme 4: Support Inuit-led research and monitoring through collaboration and community capacity building**

- *Support long term monitoring, understanding that baseline monitoring is an important tool when it comes to understanding potential impacts of development or trends changing as a result of climate change.*
- *Ensure that the search for non-Inuit partners in the Nunavik Marine Region requires the involvement of Nunavimmiut in projects by establishing a facilitating structure for recruiting participants and ensuring that local communities have the capacity to become involved in projects.*
- *I understand the phrasing of the example provided for #6, but it could reach out a tad more clearly? Something along the lines of "Support research on topics of interest to Nunavik Inuit, coordinate with Atanniuvik (...) and partner with other research organisations" or something like that?*
- *[Our organization] partners with researchers across a variety of disciplines, and in particular in Nunavik could provide a platform to facilitate a lot of the above research. We partner with Students on Ice, Ottawa University, Acadia University, and other academic institutions to contribute meaningfully to migratory bird species research, microplastics research, and other marine research based initiatives.*
- *Change "Support research to encourage research". Example what if there is research that communities or partners don't support?*
- *Support the search for non-Inuit partners in the Nunavik Marine Region.*
- *Identify Inuit research priorities to clearly identify priority areas, priority species, and the times of year to consider.*

## DRAFT OBJECTIVES UNDER THE VALUE OF KATUJJIQATIGIINNIQ

We asked respondents how the NMRPC can make our planning partners feel included and engaged in the management of the Nunavik Marine Region. The draft objectives given the greatest support by the 57 respondents were “Ensure work is open and transparent to promote confidence in the marine planning process” (93%) and “Honour the rights and interests of Inuit” (89%) (Figure 6). The selection rate for all objectives was 80% and above except for one, “Provide tools to address disagreements within the scope of work of the NMRPC”, which was selected by 74% of respondents.

Respondents offered comments regarding inclusion and engagement in the management of the Nunavik Marine Region.



*“[Nunavik Marine Region] boards and governments need to work together to respect and educate others about this [jurisdictional] complexity and work together to support this important area.”*



Figure 6: Percentage of respondents who confirmed their agreement with draft objectives to ensure planning partners feel engaged in the marine planning process. Respondents were invited to select multiple options.

Three themes emerged from the comments provided:

**Theme 1: Foster coordination, communication, and collaboration across jurisdictions to support coherent marine planning in the Nunavik Marine Region**

- *Avoid duplicating existing project screening and review process already in place within the [Nunavik Marine Region].*
- *The NMRPC and the Government of Quebec should attempt to harmonize their land use planning exercises to avoid inconsistent or incompatible uses. In particular, the NMRPC should take into account the Public Land Use Plan for the Nord-du-Québec region, which will come into effect this year.*
- *Rather than or in addition to developing “tools to address disagreements” why not develop tools to achieve compromise, accommodate multiple (and often conflicting) perspectives, and tools to ensure adaptive, flexible approaches to engaging diverse stakeholders NMRPC’s decision making processes.*
- *It is important to recognize the complex jurisdictions of the Nunavik Marine Region: the islands and areas north of the 60th parallel are part of the Nunavut territory, while other waters south of 60 are under federal jurisdiction. [Nunavik Marine Region] boards and governments need to work together to respect and educate others about this complexity, and work together to support this important area.*
- *Open and transparent communication has been very important to our work. We have learned a great deal in talking to the communities and Regional Inuit Associations, and have enjoyed our chance to communicate our findings.*
- *Suggest NMRPC make available the contact/referral information for land-based project components.*
- *We appreciate your coordination with Nunavut and Eeyou in your review and planning processes.*

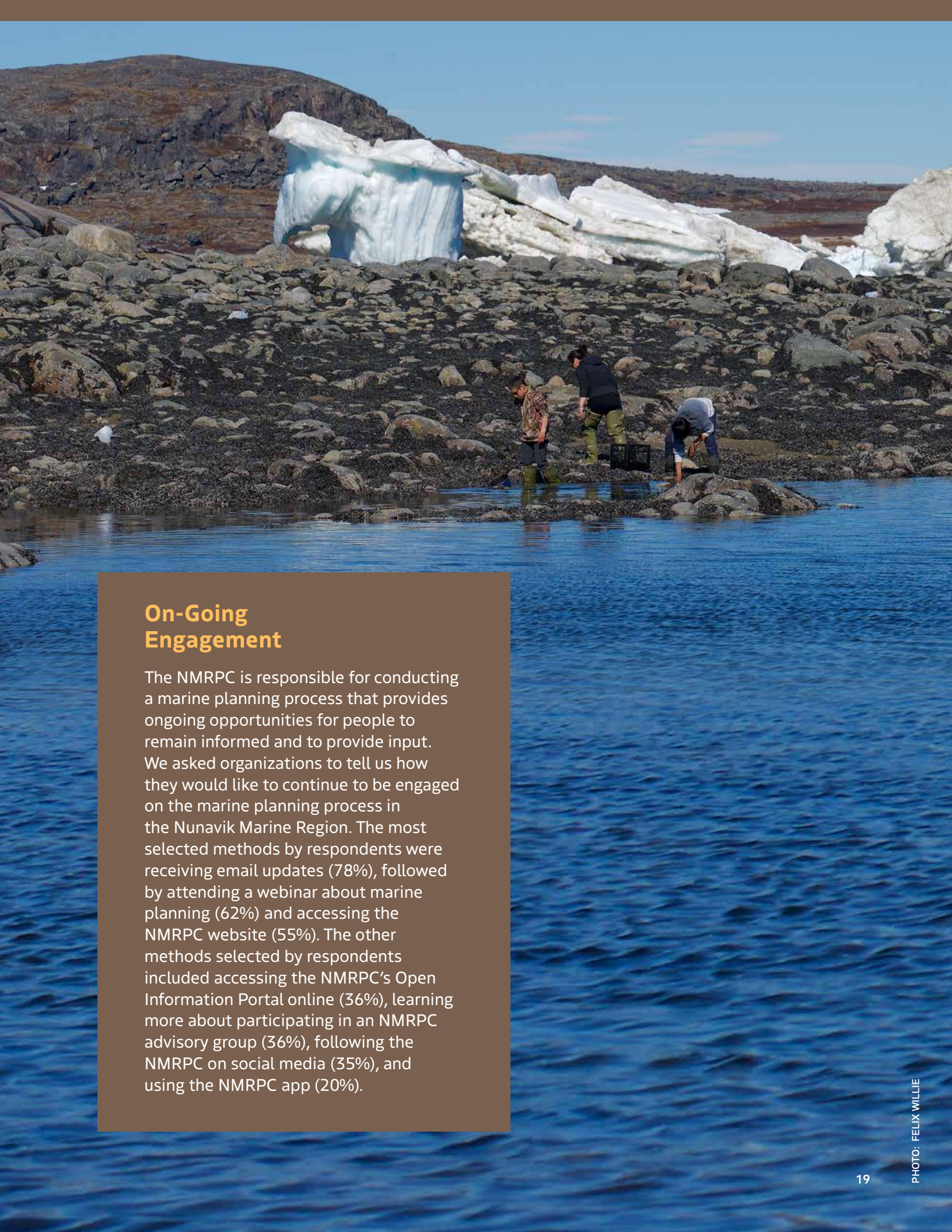
- *Encourage Inuit partners to respond to requests for support from non-Inuit partners.*
- *Systems exist to support engagement and accountability and reporting “Staketracker” program; Similar for tracking overall Strategy (reach out to [our organization] for additional information if desired).*

**Theme 2: Centre Inuit leadership and meaningful, inclusive engagement including with Inuit youth**

- *It’s not only about “honouring the rights and interests of Inuit”. Making sure the plan respects fully the rights and interests of Inuit should be the first and most important goal and value. The whole process and all decision making should involve Inuit in each step.*
- *Continue with this type of outreach.*
- *This initiative should make sure that they create meaningful inclusion of young actors in the communities. In our experience, this requires educational outreach, a trustworthy and accessible presence in communities, and actively approaching youth. It is a significant and multi-pronged effort to decrease barriers faced specifically and/or especially by young community members.*
- *[Our organization] would also like to be included in ongoing engagement...*
- *Ensure that local communities have the capacity (human resources, time, funding) to support, evaluate, comment on, and engage in various resource management projects in the Nunavik Marine Region, particularly scientific research.*

**Theme 3: Differentiate between high-level values and action-oriented guiding principles**

- *The ones I did not highlight strike me as high-level values that are perhaps less ‘specific’ to the commission’s work per se. I would see those as a general opening part to a strategic plan, for example. The other items sound to me like “guiding principles” that accompany day-to-day actions and could be the focus of this section.*



## On-Going Engagement

The NMRPC is responsible for conducting a marine planning process that provides ongoing opportunities for people to remain informed and to provide input. We asked organizations to tell us how they would like to continue to be engaged on the marine planning process in the Nunavik Marine Region. The most selected methods by respondents were receiving email updates (78%), followed by attending a webinar about marine planning (62%) and accessing the NMRPC website (55%). The other methods selected by respondents included accessing the NMRPC's Open Information Portal online (36%), learning more about participating in an NMRPC advisory group (36%), following the NMRPC on social media (35%), and using the NMRPC app (20%).

## Additional Comments

The last question of the survey was a request for respondents to help guide our work at the NMRPC. We asked people to share any additional thoughts they might have about priorities, challenges, or opportunities regarding the saltwater and islands of the Nunavik Marine Region. Many of the themes that emerged from these comments reinforce the themes from the other comments in the sections previously:

### Build local capacity and involvement in decision-making

- *Build local capacity by training youth and community members in marine stewardship, research, and environmental monitoring.*
- *Supporting local participation in decision-making, as well as creating job opportunities connected to sustainable marine management.*

### Promote collaboration across jurisdictions and policy alignment towards shared goals

- *Although the Government of Quebec is not a signatory to the Nunavik Inuit Land Claims Agreement (NILCA), we remain open to collaboration.*
- *We support the harmonization of marine policies with other regions and policies that support economic development and mineral resource exports.*
- *Work closely with other Inuit Nunangat regions of Canada.*
- *[Our organization is] open to coordination, engagement and support. As systems improved (IT), guidance, rules or standard or policies developed (internally or for external use) we are more than willing to share. Please do not hesitate to reach out. Open to becoming part of “working group” of partners, or overlap areas. Recommend if not already engaged with the Pan Territorial Board Forum that brings together all board across three territories Nunavik may also want to be brought in as you likely face similar issues and challenges.*



### **Continue to engage planning partners in the marine planning process**

- *As cruise ship operators planning voyages in the region, we would be pleased to share the environmental practices and procedures implemented onboard. Look forward to meaningful engagement with the NMRPC.*
- *Processes have been well-organized and easy to navigate. The resulting information, including community engagement, has contributed meaningfully to our planning.*
- *I am also wondering about the coastal environments, how well they are mapped, and how dynamic they are (with respect to understanding how to manage and monitor what goes on). I am open to becoming more educated if virtual seminars on the region are provided.*
- *[Our organization] would like to remain informed as the planning process moves forward. [Our organization] would like to be directly engaged by NMRPC in the upcoming steps of the process and opportunities for providing input.*
- *The commercial fishing interests of Makivvik Corporation provide significant and sustainable benefits to the people of Nunavik. It is critically important that these benefits are recognized for their social and economic impacts.*
- *Thank you for the opportunity to share feedback. This process is an example for other regions.*
- *... we are concerned that a consultation format such as this (a time intensive website-based or pdf survey) is inherently unattractive to youth members of affected communities. Consultation with young generations should be adapted to them. We hope that you consider this and our other answers in any and all future steps in this initiative.*
- *[Our organization] would also like to be engaged on any guidelines or environmental protection measures that could potentially impact shipping operations.*
- *Make an app like SIKU about the organization.*
- *If the NMRPC is interested in any information or data from [our organization] about expedition cruise operations in the region or our community engagement initiatives please feel free to contact [us].*
- *Continue to engage with the people to keep them informed as possible.*

### **Establish strategic objectives and build organizational capacity within the NMRPC to develop a Marine Use Plan that effectively balances different priorities**

- *A process will need to be developed to strategically allocate the NMRPC's limited resources toward the most pressing priorities and challenges, and to identify which issues should be addressed first. Developing a workplan, strategy, and building organizational capacity to carry out your mandate will be key.*
- *Economic development and protection of the environment and cultural heritage can often be in conflict with one another. It's a tricky balance, but I think it's possible to achieve as long as economic profit isn't the dominant priority.*
- *As you continue to gather feedback on priorities, I think it will be important to examine, strategic objectives or the strategic approach the NMRPC will contribute to advance each goal and it's priorities. As an example: on the goal of promoting culture, would there be a consultation process to select/design a network of culture sites/ events that would be prioritized by NMRPC? In this example, efforts of the NMRPC would be focused on a particular number of sites (approved by communities) and activities/ investments could be monitored for success/ failure, helping with lessons learned.*
- *I find that the application of marine spatial planning, geared towards local populations, is very relevant. Furthermore, since the use of Nunavik's maritime routes is likely to become increasingly sought-after in the coming years, it is relevant to implement a development plan now and ensure that it is functional.*
- *There is a lot of talk and discussion but the action items are too far behind, too many political agendas that are slowing the work and process.*

## Promote partnerships between Nunavik Inuit and external organizations

- *What I read really struck me as thorough and well crafted! Following the example, I offered before (and recognizing my own bias as scientific director of a research organisation aiming to bridge western science and indigenous knowledge), it might not hurt to make this partnership idea percolate a little more where relevant.*
- *I believe local/community conservation efforts and achievements often go unreported, and there is opportunity to overcome that challenge by working collaborative on the design of monitoring and reporting efforts.*
- *We would like to be engaged in the planning processes and provide input as a key industry representative for the expedition adventure tourism sector – as we believe there is a lot of untapped and unrealized value from the students, scientists, and curious-to-learn guests who will gain a broader and deeper understanding of Nunavik.*
- *We look forward to early and meaningful consultation with Inuit organizations (e.g., Makivik Corporation) to support social license and reduce conflict with [our project].*



## Collect baseline data and establish long-term monitoring

- *In the era of climate change, ecosystem disruptions and significant movements of wildlife species, including the arrival of new species in Nunavik, it could be important to establish reference levels by supporting the implementation of studies on faunal and floristic diversity to describe and quantify changes over time and be able to react appropriately if necessary.*
- *Gathering long-term monitoring data and integrating Indigenous Knowledge with scientific research.*
- *Having sufficient baseline data is necessary in any planning exercise. For the [Nunavik Marine Region], it is paramount to have baseline data on habitats, traditional knowledge, benthic maps, bathymetry, transportation routes, and other relevant spatial and attribute data in a database.*
- *Importance should be given to avian fauna in the Nunavik Marine Region, particularly migratory birds that provide connectivity between Nunavik and regions further south. Both abundant and less abundant avian species should be considered important to study since they both have the potential to have a significant influence now and in the future on the Nunavik Marine Region.*
- *Environmental studies or monitoring of faunal and floral diversity should be carried out before any industrial, mining, or maritime development in the Nunavik Marine Region in order to establish a baseline and to be able to monitor the potential impacts of these developments.*



PHOTOS: NELLIE AMIDLAK

## Additional Feedback Received

### Nunavik Marine Region Impact Review Board

The Nunavik Marine Region Impact Review Board did not complete the survey but did provide feedback via an email exchange between May 31 and June 5, 2025. They indicated that the primary role of the Impact Review Board is to assess the potential impact of proposed development projects within the Nunavik Marine Region. Based on the dialogue with the NMRPC on the possibility of streamlining the impact review process through proactive planning, the Impact Review Board provided the following feedback:

- A one-size-fits-all approach does not work well in the Nunavik Marine Region due to its large size and perspectives that can vary significantly between communities. An overly specific or complex plan will likely result in it not being approved.
- The NMRPC does not have the data required to address all relevant aspects through proactive planning.
- A successful plan will balance environmental protection with future economic opportunities that are currently uncertain therefore flexibility will be necessary.
- Makivvik should be prioritized in the marine planning process.

Further context for the Impact Review Board's review process was provided at the request of the NMRPC. Federal government involvement in impact review in the Nunavik Marine Region is limited; therefore, the federal government usually defers to local institutions. During public consultation, interested federal departments can raise concerns; however, the impact review process heavily prioritizes Inuit knowledge. If specific expertise is required, consultants are usually hired. While a technical review committee could be considered in the context of a larger review, it is not currently necessary for the types of projects being assessed.

The Impact Review Board specified that they would like to continue to be engaged on the marine planning process with the NMRPC through regular newsletter updates. They also noted that their Board would be interested in a summary of what was learned from planning partners about priorities, opportunities, and challenges in the Nunavik Marine Region to be used for project screenings and review. Further, they are open to future meetings with both the NMRPC and Nunavik Marine Region Wildlife Board as well as the possibility of coordinated outreach products and would like to discuss the possibility of refining the NMRPC's project review process.





### **University of Manitoba**

Email correspondence was received from a faculty member at the University of Manitoba on July 2, 2025. The faculty member had completed the survey but also indicated that integration of all possible options for each of the survey questions can provide an inclusive, productive, and transformative planning framework. They emphasized that the survey themes are necessary for enabling the protection and restoration of marine ecosystems while balancing economic and subsistence priorities.

### **Government of Quebec**

Email correspondence was received from the Secrétariat aux relations avec les Premières Nations et les Inuit (the Secrétariat), an agency of the government of Quebec, on July 2, 2025. The Secrétariat completed the online survey and indicated that it was a coordinated response across multiple Quebec government departments and agencies including the Ministry of Public Security and Centre for Expertise in Maritime Incident Risk Management. The email further explained that they did not respond to survey questions involving the selection of specific objectives, choosing instead to leave the identification of objectives for the Marine Planning Strategy to the NMRPC's discretion, but included specific comments where relevant.

The Secrétariat emphasized that they are interested in continued collaboration with the NMRPC to harmonize plans particularly in areas where there are differing interpretations of Quebec's northern border.

### **Kativik Regional Government**

A letter was received from the Assistant Director of Environment and Lands at the Kativik Regional Government on August 26, 2025. The letter detailed the recommendations of the Land Use Planning section for the development of the Marine Planning Strategy and Marine Use Plan in place of a completed survey (Appendix 2<sup>5</sup>). The Kativik Regional Government has jurisdiction over the land in Quebec north of the 55th parallel and acts as a municipality for any part of that territory without a municipal government. It is also responsible for the implementation of the Kativik Regional Master Plan (Master Plan), a land use plan that governs the Kativik Region as defined in the *Kativik Act* (Section 2(v)), which excludes all offshore areas and islands. Although the marine region is not within the scope of the Master Plan, there are sections that address the marine region to integrate feedback that was highlighted during consultation. One of the land use designations in the Master Plan is Areas of Interest, of which two types are highlighted in the letter:

<sup>5</sup> This letter is published with the express permission of the Kativik Regional Government [Appendix 2].

- **Areas of ecological interest** – These areas include the coastal zone which consists of a 10-km-wide buffer zone along the boundary of the marine and terrestrial environments that is important for its biological diversity and productivity. The Kativik Regional Government recommended that the NMRPC take into consideration the Master Plan’s objectives with regards to the coastal zone and that close collaboration between the two organizations for this zone is critical.
- **Areas of esthetic interest** – The Master Plan highlights Nastapoka Islands and Manitounuk Strait as areas of esthetic interest that are protected by an agreement which prohibits mining, forestry, and energy activities in these areas. The Kativik Regional Government urged the NMRPC to consider similar protections.

The Kativik Regional Government requested that integrated terrestrial-marine planning be undertaken to protect biodiversity including through connecting terrestrial protected areas with marine protected areas. This approach offers a sustainable solution to the challenges associated with differing interpretations of the northern border of Quebec that can complicate the establishment of permanent protection statuses. With regards to the Undersea Fiber Optic Project for which they are the proponent, they asked about the possibility of an exemption for emergency repairs and streamlined permitting for routine maintenance and other regularly occurring activities. Lastly, the letter requested the NMRPC’s assistance in cross-jurisdictional coordination, encouraged open and transparent collaboration including through the signing of a data-sharing agreement, and recommended that the Kativik Regional Government have the opportunity to review and provide feedback on the Marine Planning Strategy and any Marine Use Plan drafts.



## Makivvik

A letter was received from the Director of the Department of Environment, Wildlife, and Research at Makivvik on June 30, 2025, which detailed their feedback in the place of a completed survey (Appendix 3<sup>6</sup>). The letter was organized into three sections: addressing the unique relationship between Makivvik and the NMRPC, engagement and communication, and feedback on the survey. Makivvik is an organization that acts as a rights holder, landowner, and representative of Nunavik Inuit. Makivvik highlighted that, as a NILCA signatory, it both supports the mandate of the NMRPC and maintains a unique and necessary position as a planning partner.

Makivvik's request for future engagement and communication included regular and transparent communication with the NMRPC, updates on communications between the NMRPC and Makivvik contacts, and timely notice for requests for decisions or feedback. Makivvik shared that it is willing to consider participation on working groups, advisory committees or other forums established by the NMRPC. They also indicated that they are well-positioned as a member of the NILCA Implementation Committee to provide legal guidance regarding NILCA interpretation.

They highlighted that they should be informed when a specific and chosen interpretation of the NILCA will be applied. In addition, they advised that the NMRPC should adhere to NILCA language and terminology in all NMRPC documents.

Makivvik also provided specific feedback on the values, goals, and objectives in the survey:

- **Values** – Core institutional values in Nunavik that stem from pillar organizations, such as Makivvik, should be brought forward and considered in the Marine Planning Strategy and expressed fully within the marine planning process.
- **Goals** – For consistency with the NILCA, “wellbeing” should be used in place of “healthy”.
- **Objectives** – Some draft objectives are overly broad and may extend beyond the NMRPC's mandate. Makivvik proposed further discussion on this topic for clarity and alignment.

<sup>6</sup> This letter is published with the express permission of Makivvik [Appendix 3].

## WHAT'S NEXT?

We will use the feedback received through the Organization Survey, along with the feedback received through the other engagement activities, to prepare content for the draft Marine Planning Strategy. We look forward to broadening engagement with organizations through the sharing of the draft strategy for review and comment. The feedback received will be used to prepare the next version of the document, which will be provided to planning partners.

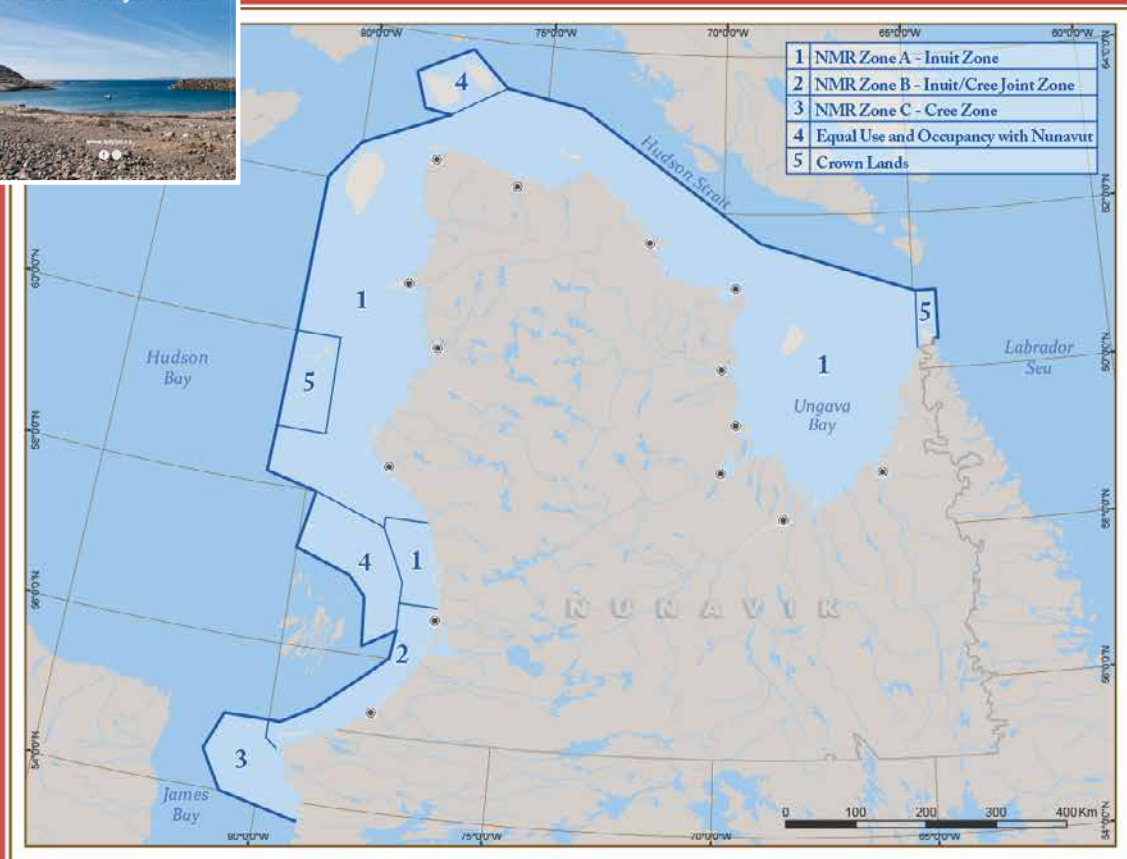
The NMRPC is committed to working together with planning partners to develop a comprehensive, relevant, and achievable Marine Planning Strategy.

# APPENDIX 1

## Organization Marine Planning Strategy Survey



STRATEGY SURVEY



### The Nunavik Marine Region Planning Commission (NMRPC)

is developing a Marine Planning Strategy. The strategy will guide efforts to balance environmental, social, cultural, and economic priorities in the Nunavik Marine Region.

The NMRPC is inviting input from a range of organizations, including government, business, industry, academic, research, and non-governmental organizations. This survey has 12 questions, takes approximately 20 minutes, and will be open until 11:59 pm on Monday, June 30, 2025. Please share your thoughts on opportunities, challenges, and priorities in the Nunavik Marine Region.

For more information about the Marine Planning Strategy or this survey, please contact us by email at [admin@nmrpc.ca](mailto:admin@nmrpc.ca).

### Part 1: Please tell us a little about you. (2 questions)

We want to make sure we've heard from a broad range of organizations.

**1. Provide the name of your organization and your contact information.**

**Organization:** \_\_\_\_\_

**Name:** \_\_\_\_\_

**Email:** \_\_\_\_\_

**Phone:** \_\_\_\_\_

**2. Select the option(s) below that describe your organization. Select all that apply.**

- |   |   |
|---|---|
| <input type="checkbox"/> Inuit organization               | <input type="checkbox"/> Business or industry                               |
| <input type="checkbox"/> Federal government               | <input type="checkbox"/> Academia   |
| <input type="checkbox"/> Indigenous government            | <input type="checkbox"/> Research institute                                 |
| <input type="checkbox"/> Territorial government           | <input type="checkbox"/> Environmental non-governmental organization        |
| <input type="checkbox"/> Regional government              | <input type="checkbox"/> Business or industry non-governmental organization |
| <input type="checkbox"/> Local government                 | <input type="checkbox"/> Social or cultural non-governmental organization   |
| <input type="checkbox"/> Institution of public government | <input type="checkbox"/> Other: _____                                       |

### Part 2: Values and Goals (4 questions)

Values and goals will be used to shape marine planning in the Nunavik Marine Region. For example, when decisions must be made, the options that best fit with the values and goals will be chosen.

**BELOW ARE THE CURRENT VALUES THAT GUIDE THE WORK OF THE NMRPC.**

#### VALUES

**Nunaqqatigiinni:** The people of Nunavik are defined by their relationships with each other.

**Pivaalliqatigiinni/Makitaniq:** The people of Nunavik grow and prosper together.

**Nunamiingaaqniq:** The people of Nunavik, their way of life comes from the land and their relationship with the land.

**Katujjiqatigiinni:** Working together and collaboratively to find ways forward.

**3. Do you agree that these values are a good overall fit for guiding the management of development and activities in the Nunavik Marine Region?**

- Yes  
 No

**4. If you picked no, please explain why.**

\_\_\_\_\_

\_\_\_\_\_

\_\_\_\_\_

\_\_\_\_\_

\_\_\_\_\_



BELOW ARE THE CURRENT GOALS THAT GUIDE THE WORK OF THE NMRPC.

## GOALS

### Healthy People and Community

- Promote and protect culture, language, tradition, places of importance, and the uniqueness of Nunavik communities and their institutions.
- Foster community growth by being open, welcoming, and inclusive.

### Healthy Economy

- Economic opportunities and meeting the needs of the community contribute to the wellbeing of Nunavimmiut.
- Infrastructure, including transportation and communication, contribute to the aspirations and wellbeing of Nunavimmiut.
- A healthy economy that not only meets, but exceeds, the basic needs of Nunavimmiut (housing, healthcare, justice, social services, food security).

### Healthy Environment and Ecosystems

- Promote and support traditional economies, alternative energy, and eco-friendly practices for the holistic wellbeing of Nunavimmiut and Nunavik.
- Consider the sustainability of the environment and the integrity of ecosystems in all plans and activities.

### Integrity & Inclusion

- Nunavimmiut and planning partners feel included and are engaged in the planning process, the implementation of the plan, validation of results, and the measuring of success.

5. Do you agree that these goals are a good overall fit for guiding the management of development and activities in the Nunavik Marine Region?

- Yes  
 No

6. If you picked no, please explain why.

---

---

---

---

---

### Part 3: Priorities (4 questions)

We want to hear your thoughts about opportunities and challenges in the Nunavik Marine Region to help us shape our work.

#### 7. How can the NMRPC help promote and protect Inuit culture? Pick as many options as you like.

- Support opportunities to practice and share culturally important traditions, sites, and artifacts**

*Example Actions:* Protect areas with Inuit artifacts, support local practices, events, and programs

- Promote a vibrant local harvesting economy**

*Example Actions:* Facilitate access to marine resources for harvesting, support inter-community trade

- Foster increased individual and community mental health, physical health, and wellbeing**

*Example Actions:* Promote the nutritional value and quality of country foods, help people spend time on the saltwater and islands

- Address climate change**

*Example Actions:* Recognize that climate change has environmental and human impacts, help communities adjust to climate change, support steps to reduce the impacts of climate change in the future

- Increase the capacity of communities and individuals to remain safe while on the land**

*Example Actions:* Improve emergency response capacity, prioritize cleaning up hazardous waste sites, explore icebreaking policies that support Inuit transportation and harvesting

- Respect and promote Inuit Qaujimajatuqangit (IQ)**

*Example Actions:* Seek and apply IQ when managing uses in the marine environment, recognize holders of IQ, record and preserve IQ shared with the NMRPC

- Respect and protect the Inuit language**

*Example Actions:* Incorporate traditional place names into all documents, ensure all NMRPC materials are translated

- Highlight the national importance of wellbeing in northern communities**

*Example Action:* Explain that increased wellbeing in Arctic communities supports Inuit self-determination in the North

- What did we miss?** Please tell us your thoughts about how we could further promote and protect Inuit culture.

---



---



---



---



---



---



---

**8. How can the NMRPC support a strong coastal economy? Pick as many options as you like.**

- Understand the economic priorities of Nunavik Inuit and communities**  
*Example Action:* Engage with Nunavimmiut to identify the development they want to see
- Support a variety of development**  
*Example Actions:* Allow a range of development that is consistent with Inuit values and priorities, coordinate with industry to identify important areas for their activities and understand their plans for growth, encourage efforts to help fishers, carvers, outfitters, and others
- Remove unnecessary barriers to development**  
*Example Actions:* Conduct meaningful engagement before considering restrictions on development, ensure that only necessary restrictions are put in place, provide clear information to developers about the requirements for projects
- Manage marine transportation routes to avoid conflicts**  
*Example Action:* Support access to transportation infrastructure and corridors for safe passage and economic development
- Focus on sustainable economic development**  
*Example Action:* Prioritize development projects that bring money to Nunavik communities without compromising the health of the environment
- Promote increased educational success of the local population**  
*Example Action:* Increase access to local training and skill development
- Promote increased employment success of the local population**  
*Example Actions:* Support Inuit-owned businesses and Inuit-led collection of data, explore further opportunities in Nunavik with the Inuit Guardians program (a program to prioritize Inuit stewardship of Inuit lands and waters)
- Identify infrastructure requirements to support healthy, safe communities and the economy in the saltwater environment**  
*Example Action:* Explore the infrastructure needs of Nunavik communities
- Partner with others to coordinate economic development in the Arctic**  
*Example Action:* Work with other indigenous organizations in the Arctic
- What did we miss? Please tell us your thoughts about how we could further support a strong coastal economy.**

---

---

---

---

---

---

---

**9. What should the NMRPC do to protect the health of the environment and the ecosystems in the Nunavik Marine Region? Pick as many options as you like.**

- Maintain and, where necessary, restore ecosystem integrity**  
*Example Actions:* Limit development in environmentally sensitive areas, identify waste sites and prioritize their cleanup
- Protect and conserve special marine areas and species**  
*Example Actions:* Identify areas with rare, unique, and/or culturally valued species; manage development that would harm these areas while respecting Nunavik Inuit’s harvesting rights
- Understand the current state of the environment and support monitoring**  
*Example Action:* Learn about how the environment in the Nunavik Marine Region is doing now and track changes over time
- Consider the impacts of multiple projects (also known as cumulative impacts)**  
*Example Action:* Avoid allowing multiple projects in one area that individually would not harm the environment but that together may have harmful impacts
- Partner with others to protect the environment and animals**  
*Example Actions:* Work with other organizations to help protect migratory species that travel beyond the Nunavik Marine Region, explore working with other Inuit organizations to make a network of protected areas
- Support research relevant to Nunavik communities**  
*Example Actions:* Support research on topics of interest to Nunavik Inuit, coordinate with Atanniuvik (Nunavik’s new research organization)
- What did we miss?** Please tell us your thoughts about how we could do more to help protect the environment.

---

---

---

---

---

---

---

**10. How can the NMRPC make Nunavimmiut and its other planning partners (government, industry, businesses, academia, researchers, non-governmental organizations, and others) feel included and engaged in the management of the Nunavik Marine Region? Pick as many options as you like.**

- Ensure work is open and transparent to promote confidence in the marine planning process**

*Example Actions:* Regularly share information about the work being done and how decisions are made, seek and apply a broad range of information sources including Inuit Qaujimajatuqangit, local knowledge, academic literature and guidance, as well as industry and government sources

- Conduct meaningful and timely engagement**

*Example Actions:* Promote public awareness and discussion with all planning partners, visit Nunavik communities to seek feedback

- Honour the rights and interests of Inuit**

*Example Action:* Devote special attention to protecting and promoting the existing and future wellbeing of Inuit and Inuit Owned Land

- Coordinate with nearby Indigenous Peoples and communities with overlapping and shared rights**

*Example Action:* Partner with the Eeyou Marine Region Planning Commission, Nunavut Planning Commission, Nunatsiavut Government, and others

- Coordinate with other groups created under the Nunavik Inuit Land Claims Agreement**

*Example Action:* Work with the Nunavik Marine Region Impact Review Board and the Nunavik Marine Region Wildlife Board

- Provide tools to address disagreements within the scope of work of the NMRPC**

*Example Actions:* Ensure opportunities for discussion, create working groups and committees as needed

- Communicate information about proposed projects in the Nunavik Marine Region**

*Example Action:* Share information online about the projects that people are planning

- Consider and respond to input received during engagement**

*Example Actions:* Work with Nunavik Inuit and other planning partners to learn about their priorities for the Nunavik Marine Region, maintain a publicly available log of feedback received and NMRPC responses to the feedback

- What did we miss?** Please tell us your thoughts about how we could ensure Nunavimmiut and our other planning partners feel included and engaged in the management of the Nunavik Marine Region.

---

---

---

---

---

---

---

## Part 4: Ongoing Engagement (1 question)

11. Are you interested in further engagement regarding marine planning in the Nunavik Marine Region? If yes, please select all that apply.

I would like to:

- Receive email updates, such as newsletters.
- Attend a webinar about marine planning in the Nunavik Marine Region.
- Learn more about participating in an advisory group.
- Follow the NMRPC online through (select all that you are interested in):
  - Social media (find us on [Facebook](#) and [Instagram](#))
  - NMRPC website ([www.nmrpc.ca](http://www.nmrpc.ca))
  - Open Information Portal (<https://portal.nmrpc.ca/projects/oip/>)
  - NMRPC app (available for Apple and Android devices)

12. Please share any additional thoughts that you might have about priorities, challenges, or opportunities regarding the saltwater and islands of the Nunavik Marine Region that may be helpful in guiding our work at the NMRPC. All comments are welcome, please write as much or as little as you like.

---

---

---

---

---

---

---

**SUBMIT FORM**

**Thank you!**

**Your time and input are very much appreciated.**

If you have additional comments or would like to learn more about the NMRPC, please email us [admin@nmrpc.ca](mailto:admin@nmrpc.ca) or visit us [online](#).





*defined in this master plan be observed in these areas.*” Therefore, we recommend that the NMRPC do the same by respecting the spirit of the orientations and objectives of our KRMP in, what we call, the coastal zone (10 km wide buffer zone). Also, in the land use designations, there are three types of areas of interest (historical, esthetic and ecological). The goal of the areas of interest network is to preserve these areas for the benefit of all by protecting them from the harmful impacts of human activities in general and industrial activities in particular. Two of these areas of interest mention, at some point, sites in the marine region:

➤ *Areas of Ecological Interest*

In the area of Ecological Interest, the coastal zone has been included in the list of areas of ecological interest knowing that this zone is not under the KRG’s jurisdiction. The coastal zone consists of a 10-kilometre-wide buffer zone forming the interface between marine and terrestrial zones. The coastal zone is known for its important biological diversity and productivity; This area is essential to the survival and reproduction of water birds, fish, and marine mammals. Due to the high concentration of nutrients in this zone, a large variety of wildlife species come here to feed. The coastal zone includes the areas at the mouth of the Rivière Nastapoka (Hudson Bay) and the Rivière Marralik (Ungava Bay) where the beluga whale concentrates in the summer.

**Table 1 – Areas of Ecological Interest Identified by the Communities for Which Formal Government Recognition and Protection are Requested**

Area Name	Location	Particular Interests	Project and Promoter
Coastal zone (not under the jurisdiction of the KRG)	A coastal marine zone 10 km wide along the region's coastlines	– Area recognized for its biological diversity and for its important biological productivity	
Sanctuary of the Rivière Marralik (not under the jurisdiction of the KRG)	Mouth of the Rivière à la Baleine (Ungava Bay)	– Area where Beluga gather in the summer	Regulation adopted to protect the Beluga (Fisheries and Oceans Canada, Makivik Corporation, KRG)
Estuary of the Rivière Nastapoka (not under the jurisdiction of the KRG)	Mouth of the Rivière Nastapoka (Hudson Bay)	– Area where Beluga gather in the summer	Regulation adopted to protect the Beluga (Fisheries and Oceans Canada, Makivik Corporation, KRG)

The coastal zone is of vital importance for the communities of the Kativik Region. Any decision regarding land use planning and resource management must take this zone into consideration. Close collaboration and transparency between the NMRPC and the KRG are essential in this zone. The main measure that is proposed in the KRMP for the coastal zone is by establishing marine routes for ice breakers and commercial ships. These marine routes should be determined in collaboration with the boards and government bodies concerned, which include the KRG. The Marralik River area, in terms of its terrestrial portion, is now also under protected area status. The NMRPC should consider this information and plan for its annexation in its marine protected area planning, as recommended below.

➤ *Areas of Esthetic Interest*

The areas reserved for parks are covered by an agreement which stipulates that mining, forestry, and energy activities are prohibited in these areas. Similar measures are sought for the sites proposed in the territory by the residents. With regard to the Nastapoka Islands and Manitounuk Strait, the KRG encourages the NMRPC, the federal government, and the Government of Nunavut to adopt the same strategy.

**Table 2 – Areas of Esthetic Interest Identified by the Communities for Which Formal Government Recognition and Protection are Requested**

Area name	Location	Particular Interest	Project and Promoter
Nastapoka Islands (not under the jurisdiction of the KRG)	On the coast of the Hudson Strait, north of Lac Tasiujaq	– spectacular formations	Natural heritage site (KRG)
Manitounuk Strait (not under the jurisdiction of the KRG)	On the coast of the Hudson Strait, north of Kuujjuarapik	– spectacular formations	Natural heritage site (KRG)

• **Protected Areas within the Kativik Region**

As part of its mandate for land-use planning, the KRG is engaged in the planning of protected areas within the Kativik region. In 2020, a significant milestone was achieved with the designation of additional protected areas, meeting the objective of establishing 20% protection across Nunavik’s territory.

➤ *Need for Alignment Between Terrestrial and Marine Protected Areas*

The Inuit people have long utilized the interior, coastal, and marine environments for traditional and subsistence activities. Numerous animal species also inhabit these diverse ecosystems, using them for reproduction, feeding, refuge, rest, and migration. Water resources flow through all of these environments, contributing to a continuous and interconnected system.

To effectively and sustainably protect biodiversity, both from an ecological and cultural perspective, an integrated approach to land and marine planning is essential. Effective biodiversity conservation measures must take into account the interdependence of both terrestrial and marine environments. Currently, many of Nunavik’s protected areas are limited to land-based designations, with their boundaries stopping at the coastline. By linking terrestrial protected areas with marine protected areas, we can ensure greater ecosystem connectivity and, as a result, more effective protection of biodiversity.

A coordinated approach to biodiversity protection across both land and marine domains will foster a more sustainable and resilient environment, benefiting both the nature and the communities that depend on it.

➤ ***Issues Regarding Quebec's Territorial Boundaries***

Several protected areas within Nunavik are encountering boundary-related challenges, particularly due to differing interpretations of Quebec's northern boundary. Presently, the boundaries of certain protected areas along the coastline have been delineated by the Government of Quebec beyond the limits of the Kativik region as defined by the James Bay and Northern Quebec Agreement (JBNQA). This discrepancy complicates the establishment of permanent protection statuses, as the boundary lines are not consensually agreed upon by all stakeholders.

In response to this issue, we propose examining the potential for creating mixed protected areas that include both terrestrial and marine zones. This approach may offer a viable solution to certain boundary-related challenges, as it would be based on both the JBNQA and the Nunavik Inuit Land Claims Agreement (NILCA), which share a common interpretation of territorial limits. Moreover, such a framework would contribute to reinforcing the coherence, integrity, and long-term sustainability of biodiversity conservation efforts.

• **Undersea Fiber Optic Project**

The permitting challenges associated with undersea fibre optic cable operations are considerable. Over time, the cable will require both routine and emergency maintenance. As is well known, the operational season for such activities, particularly emergency repairs, is extremely limited.

We respectfully inquire whether a project exemption could be considered for emergency repairs, or whether the permitting process could be streamlined for ongoing maintenance activities. For example, maintenance work scheduled in a specific community should not necessitate an information session across all Nunavik communities. A formal notification to the relevant Northern Village and Landholding Corporation should be deemed sufficient.

Furthermore, vessels engaged in this work must meet the official and minimum standards established by all permitting authorities. This includes, but is not limited to, compliance with the Polar Code, the presence of an ice-trained pilot or captain onboard, and the implementation of approved spill and discharge plans that meet both Canadian and Nunavik-specific requirements. These standards would also allow for vessel substitutions in the event of unavailability.

For activities that are repetitive in nature, permitting standards should be clearly defined and not require individualized studies, provided that established guidelines are followed. This would facilitate more efficient planning of surveys and allow for minor adjustments in survey locations without triggering additional regulatory burdens.

- **Cross jurisdictional Projects**

Since the NMRPC is responsible for the marine region use plan and is the organisation with the best understanding of the division of the marine region and the entities with jurisdiction over the granting of permits and authorizations, could the NMRPC assist or take the initiative to coordinate with the governments of Nunavut, Ontario, or the federal government for projects undertaken by Nunavik entities?

- **Collaboration on Projects of Mutual Interest**

Various initiatives in Nunavik, whether related to development, research, or other activities, may encompass both terrestrial and marine environments. In this context, it is essential that the KRG and the NMRPC maintain an open and transparent dialogue to support integrated territorial and marine planning and management.

To this end, data sharing between the two organizations is of critical importance, and formal agreements should be established to facilitate this collaboration.

- **Marine Planning Strategy Review by the KRG**

To ensure that the strategy aligns with the KRG's mandates and operations and with the NMRPC principles of Engagement, it is recommended that each KRG department or section with responsibilities related to the NMRPC be represented at the upcoming workshop for the development of the Marine Planning Strategy.

We also recommend that the KRG be afforded the opportunity to review the strategy once it has been developed and each draft Marine Use Plan developed in the process. This will allow the relevant departments to provide informed comments, express any concerns, and contribute their respective areas of expertise to ensure a comprehensive and well-aligned outcome.

We hope that the comments provided by the Land Use Planning section will help strengthen your strategy. Please note that other KRG departments may also share their feedback separately.

For any questions related to land use on the Kativik Region, you may contact **Emilie Dalpé-Turcotte**:  
[edturcotte@krg.ca](mailto:edturcotte@krg.ca)

Best regards,

*Veronique Gilbert*  
Veronique Gilbert

Assistant-Director Environment and lands  
Kativik Regional Government  
[vgilbert@krg.ca](mailto:vgilbert@krg.ca)

# APPENDIX 3

## Letter from Makivvik



June 30, 2025

Sent via email : ([jkennedy@nmrpc.ca](mailto:jkennedy@nmrpc.ca))

Ms. Janelle Kennedy  
Executive Director  
Nunavik Marine Region Planning Commission  
P.O. Box 1139  
Kuujuaq (Qc) J0M 1C0

Subject: Recommendations on Makivvik-Nunavik Marine Region Planning Commission (NMRPC) engagement in relation to planning development

---

Dear Ms. Kennedy:

Following our March correspondence signed by Mr. Adamie Delisle-Alaku, Vice-President of the Department of Environment, Wildlife and Research (DEWR), we have been pleased to engage in more regular communications between our two institutions. This has allowed us to assess the progress made by your organization, and to better understand the planning efforts related to your key mandate, the development of a Land Use Plan for the Nunavik Marine Region.

To continue fostering the unique working relationship needed between our institutions, and rather than completing the organizational survey you proposed, we are submitting the attached document containing our initial recommendations. These reflect the results of a technical analysis and are submitted without prejudice to any further comments and recommendations that may be made on an on-going basis by our technical staff, in-house experts and leadership.

Sincerely,

Barrie Ford, Director

DEWR

Makivvik

## **1- Rationale for the uniqueness in the engagement with Makivvik**

Makivvik is the birthright organization that represents the Inuit of Nunavik. It is mandated to protect the rights and interests of its members, and safeguard the regimes established by the 1975 James Bay and Northern Quebec Agreement (JBNQA) and the 2006 Nunavik Inuit Land Claims Agreement (NILCA). In the specific context of the Nunavik Marine Region, it acts as rights holder, landowner and holds important responsibilities when it comes to representing Nunavik Inuit both from a collective and individual perspective.

As signatory party to the NILCA, Makivvik fully supports the mandate of the Nunavik Marine Region Planning Commission (NMRPC), an Institution of Public Government (IPG) created at treaty negotiations closing. As a key and necessary partner, Makivvik gives full recognition to the NMRPC endeavor<sup>1</sup>. Indeed, the fact that Makivvik holds specific roles and responsibilities makes it a unique partner in the fulfilment of the NMRPC's mandate. For example, sections 6.2.1 and 6.8.2 gives further evidence to the inextricable ties between Makivvik and the NMRPC when it comes to Land Use Planning<sup>2</sup>.

This submission therefore aims at laying the foundation of a successful relationship between our organization, one that will respect Makivvik's uniqueness and will contribute meaningfully towards the achievement of the NMRPC's mandate.

## **2- Recommendation on engagement and communication**

### **2.1 Moving forward**

Makivvik is seeking to establish regular, transparent and privileged communication with the NMRPC, this through the establishment of a bilateral Makivvik-NMRPC platform (with representation of the different Makivvik Departments). Makivvik would also like to be informed of the regular communications that are made by the NMRPC using the Makivvik contacts that were provided previously.

Whenever a communication is sent to Makivvik seeking for a decision/position, sufficient time should be allocated so that there is internal coordination as well as for gathering guidance from the Makivvik's Executives. Lastly, Makivvik will give due consideration in having representation in any and all technical working groups, advisory committees or other forums that are established by the NMRPC as part of its mandate's fulfillment. As such, our Economic Development Department indicated being ready to act as the privileged partner when it comes to communication and outreach of Nunavik Inuit Businesses.

---

<sup>1</sup> Notably: 6.4.1 a) *establish broad planning policies, objectives and goals for the NMR in conjunction with Government; b) develop, consistent with other provision of the Article, land use plans that guide and direct resource use and development in the NMR.*

<sup>2</sup> NILCA 6.2.1g) *an effective land use planning process requires the active participation of both the Government and Nunavik Inuit ; NILCA 6.8.2 The land use planning process shall apply to Nunavik Inuit Lands. Land use plans shall take into account Nunavik Inuit goals and objectives for Nunavik Inuit Lands.*

## **2.2 NILCA interpretation**

Makivvik should be informed whenever the NMRPC encounters issues with the interpretation of the NILCA. As signatory of said agreement, Makivvik is a member of the NILCA Implementation Committee created under Article 23, which is notably mandated to identify and address areas of challenging interpretations. Furthermore, building on our Legal Department expertise, Makivvik is in the best position to address uncertainties regarding Parties' intent and Articles' provisions. In any case, Makivvik should be informed and have an opportunity to discuss when an IPG intends to proceed with a specific and chosen interpretation of the NILCA.

With respect to this point, we feel it is important to address the discrepancy between the terminology used in the NILCA and that found in the documents produced by the NMRPC, the latter referring to "Marine Use Plan", whereas Article 6 of the Agreement is explicit in defining the institution's core mandate as the development and establishment of a "Land Use Plan". While we understand that the final product is intended, per the NILCA, to apply to the entire NMR, including the Nunavik Inuit Lands (NIL), we nonetheless urge to use the terminology and concepts established in the NILCA, as agreed upon by the signing parties. Should the NMRPC have concerns or questions regarding the use of this terminology and concepts, it is encouraged to bring the matter to Makivvik's attention, so that an appropriate assessment and path to resolution can be considered.

## **3- Organizational Survey**

Concerning the NMRPC Organizational Survey we were explained that the objective of said survey is to *"validate draft content for the (Marine) Planning Strategy. The strategy will identify the issues to be addressed within the planning process as well as actions for tackling them"* (Susan Dean e-mail May 20<sup>th</sup>, 2025).

### **3.1 Values and Goals**

It is our understanding that the values referencing in your engagement documents were developed and validated through the public planning process so far undertaken, as part of your preliminary actions, with Nunavimmiut (community engagement, surveys etc.). We support the process that has led to the identification of Inuit values reflecting their relationship with one another, with the land and with the advancement of their interests.

That being said, we wish to bring to your attention the existence in Nunavik of core institutional values that stem from pillar organizations and have a profound influence in Nunavik. Makivvik, as the representative of the Nunavik Inuit Nation, is one of such pillars. Makivvik is driven by deeply anchored collective values of self-determination, self-governance and Inuit control over their lands and waters. It is important that these values be brought forward and considered in the context of the Planning Strategy that will feed

into the Land Use Planning elaboration. Moreover, the upcoming Land Use Planning process should have room for the full expression of such values.

Your documents also present the various “goals” the Planning Strategy intends to address. When it comes to the one goal presented as “Healthy People and Community”, we would simply bring forward that the wording of “healthy” can bring confusion with respect to the various roles and responsibilities in presence, since that could mistakenly be understood to refer to people’s health which is under the responsibility of other Nunavik organizations. We would recommend reverting to NILCA wording for such goal, which better represent the perspective the NMRPC should use when it comes to the “wellbeing” of Nunavik Inuit as a principle forming part of the development of planning policies, priorities and objectives, and acting as core purpose to the Land Use Plan.<sup>3</sup>

### 3.2 Priorities

The importance of the NMRPC’s mandate cannot be overstated; focus should however remain on producing the clear and tangible outcome required — namely, the development of a **Land Use Plan**, as set out in the NILCA. On that account, some of the stated objectives appear overly broad and may risk creating confusion regarding the NMRPC’s actual mandate and areas of competency under Article 6. We noted one such example above: while Section 6.2.1(b) rightly identifies the consideration of “well-being” as a guiding principle, it is essential to define what is meant by “well-being” in this context, without implying that the NMRPC should implement or directly act on this concept. It is one lenses that the NMRPC has to consider while integrate it within its planning objectives. We see this as one of the foundational elements in establishing the baseline findings upon which the core work of the NMRPC will rely — namely, the development of the Land Use Plan, through which future utilization, development and conservation of the NMR will be considered. Additionally, some of the example actions provided seem, in our view, to fall outside the NMRPC’s mandate. We would welcome the opportunity to discuss this further for greater clarity and alignment.

---

<sup>3</sup> 6.2.1 The following principles shall guide the development of planning policies, priorities and objectives: (b) the primary purpose of land use planning in the NMR shall be to protect and promote the existing and future well being of those persons and communities resident in or using the NMR taking into account the interests of all Canadians; special attention shall be devoted to protecting and promoting the existing and future well-being of Nunavik Inuit and Nunavik Inuit Lands;

6.3.2 The purpose of a land use plan shall be to protect and promote the existing and future well-being of those persons and communities resident in or using of the NMR, taking into account the interests of all Canadians, and to protect, and where necessary, to restore the environmental integrity of the NMR.

