

ᐱᓇᓴᓐᓂᓴᓐ ᑕᓂᐅᓴᓐ ᐸᓐᓇᓐᓴᓐ
NMRPC-ᓐᓴᓐ ᐸᓐᓴᓐᓴᓐ ᐅᓐᓴᓐᓴᓐᓴᓐ
ᓐᓴᓐᓴᓐᓴᓐᓴᓐᓴᓐᓴᓐ

Resources for Marine Planning

NMRPC Use-and-Occupancy Study

Nunavik Marine Region Planning Commission

kN[s2 bEsdtzk5 X3N†5 w5y?pq5

Wednesday 4 February 2026

ᐱᓐᓴᓐᓴᓐᓴᓐᓴᓐ 4 2026

Montreal

m8gpx9

x5pÆ1qg5 wl3dy3jxzJi4 cspn3î5 Kinds of Cultural Research



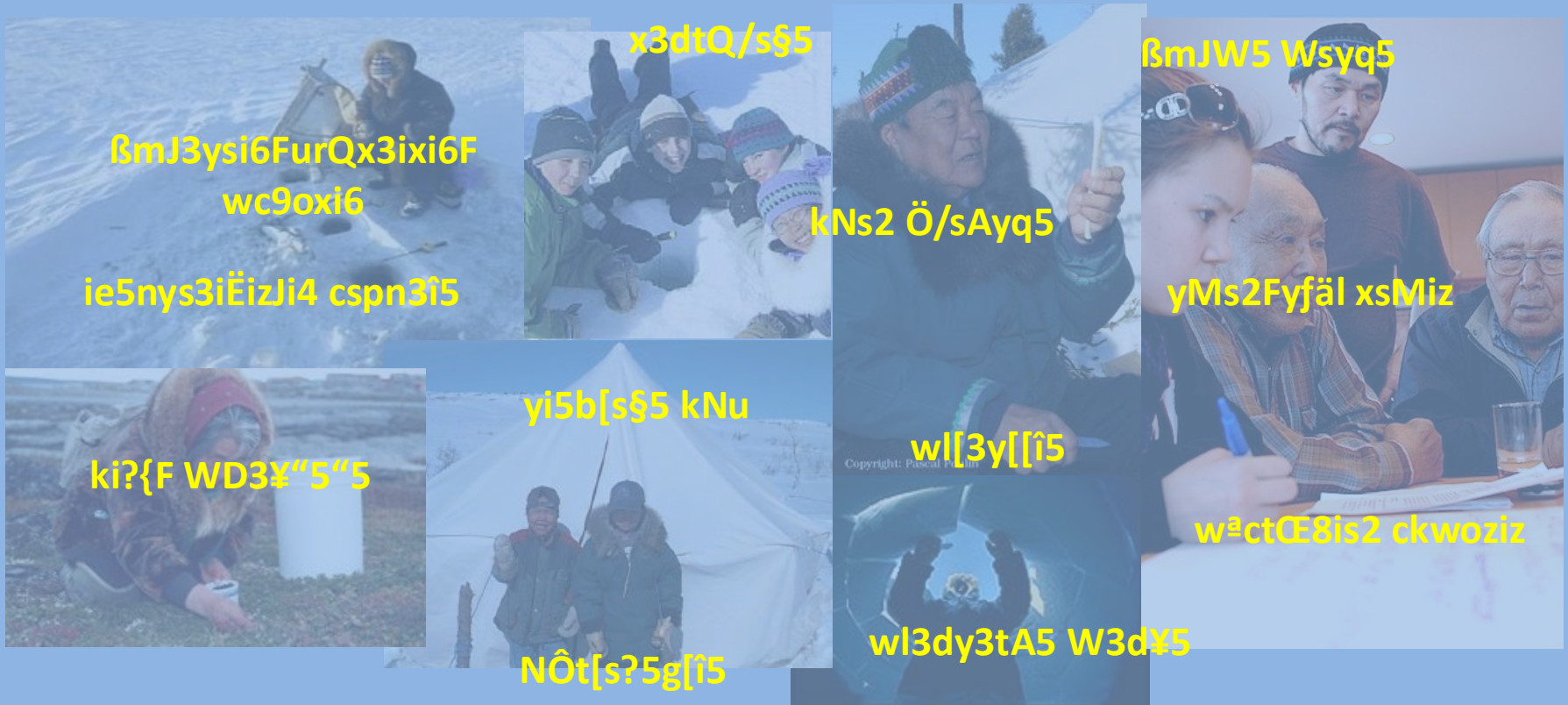
traditional knowledge (TK) = Aboriginal Traditional Knowledge (ATK)
wl3dy3tA5 cspmsygò5 = kNc3ç¥mJ5 wl3dy3tA5 cspmsygò5

traditional use studies (TUS)
use-and-occupancy (mapping) studies (UO/UOM)
wl3dy3jxzJi4 wo8ixi6
xg3i6 kNymi3l GkN1axos3i6H wo8ixi6

traditional ecological knowledge (TEK)
wl3dy3tA5 cspmsygò5
x?toEi3u4

x5pÆ1qg5 wl3dy3jxzJi4 cspn3î5

Kinds of Cultural Research



traditional knowledge (TK) = Aboriginal Traditional Knowledge (ATK)

wl3dy3tA5 cspmsygò5 = kNc3ç¥mJ5 wl3dy3tA5 cspmsygò5

traditional use studies (TUS)

use-and-occupancy (mapping) studies (UO/UOM)

wl3dy3jxzJi4 wo8ixi6

xg3i6 kNymi3l GkN1axos3i6H wo8ixi6

traditional ecological knowledge (TEK)

wl3dy3tA5 cspmsygò5

x?toEi3u4

Kinds of Cultural Research



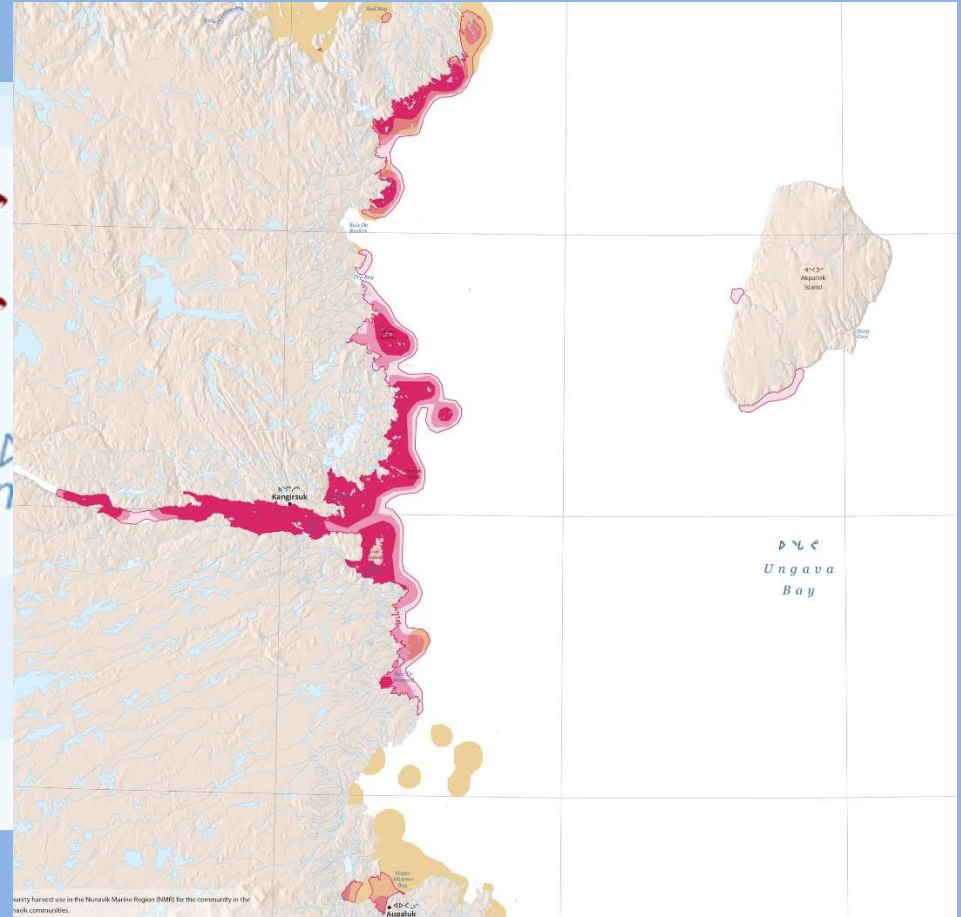
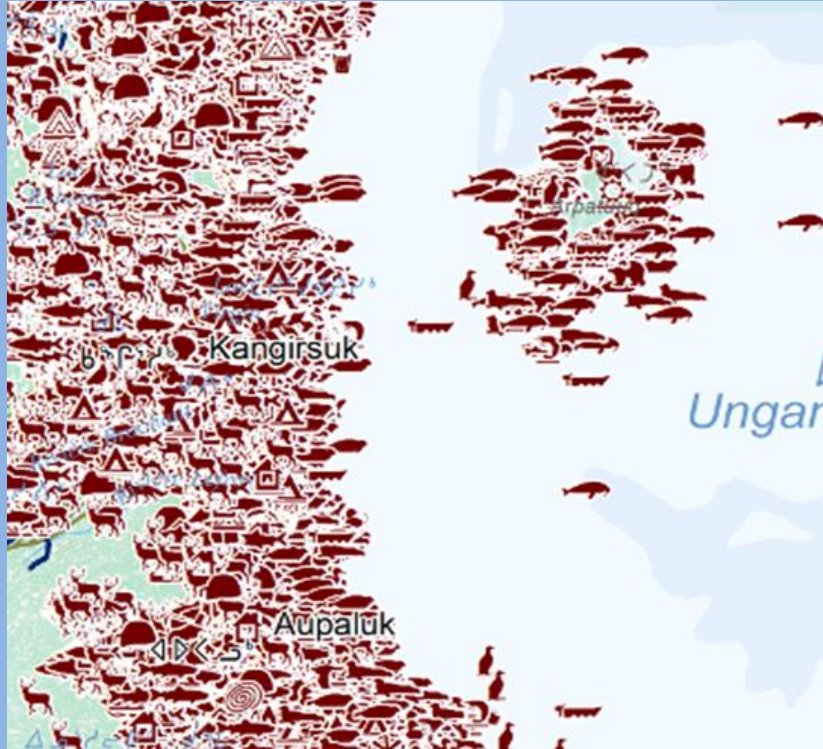
traditional knowledge (TK) = Aboriginal Traditional Knowledge (ATK)
 w13dy3tA5 cspmsygò5 = kNc3ç¥mJ5 w13dy3tA5 cspmsygò5

traditional use studies (TUS)
 use-and-occupancy (mapping) studies (UO/UOM)
 w13dy3jxzJi4 wo8ixi6
 xg3i6 kNymi3l GkN1axos3i6H wo8ixi6

traditional ecological knowledge (TEK)
 w13dy3tA5 cspmsygò5
 x?toEi3u4

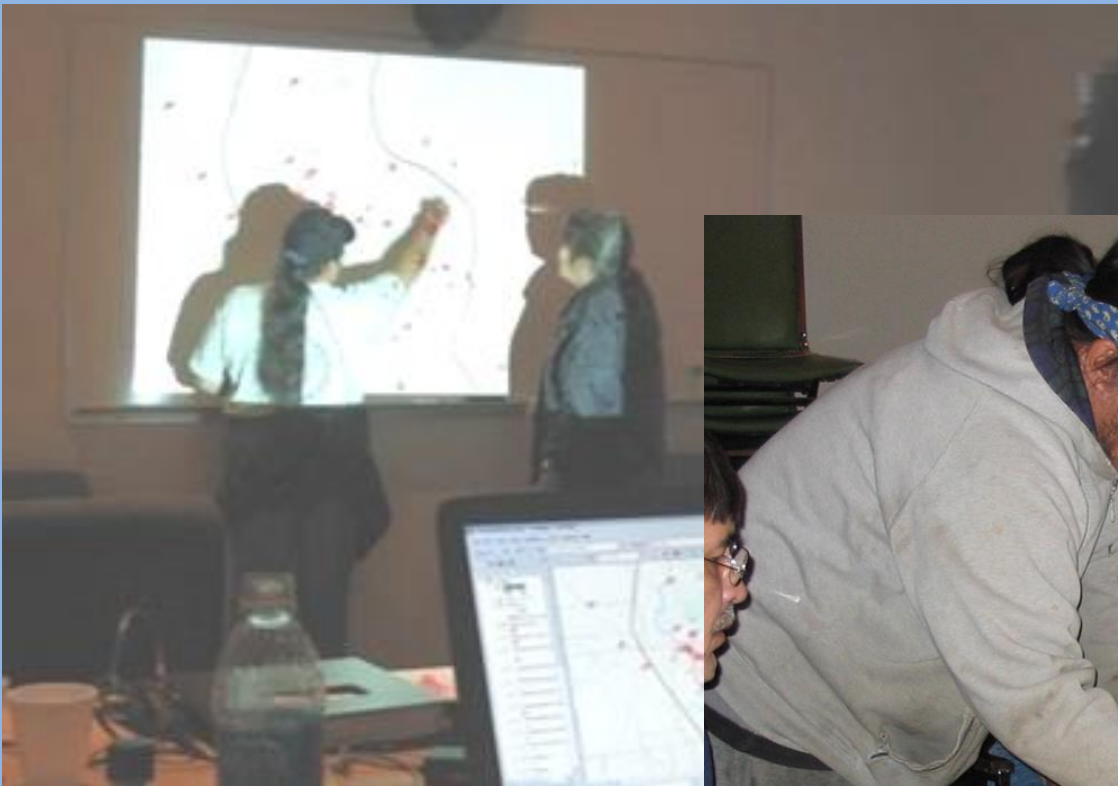
ᐃᑦᑦᑦᑦᑦᑦ ᐃᑦᑦᑦᑦᑦᑦ ᐃᑦᑦᑦᑦᑦᑦ ᐃᑦᑦᑦᑦᑦᑦ ᐃᑦᑦᑦᑦᑦᑦ

Analyze Inuit Use of the Marine Region



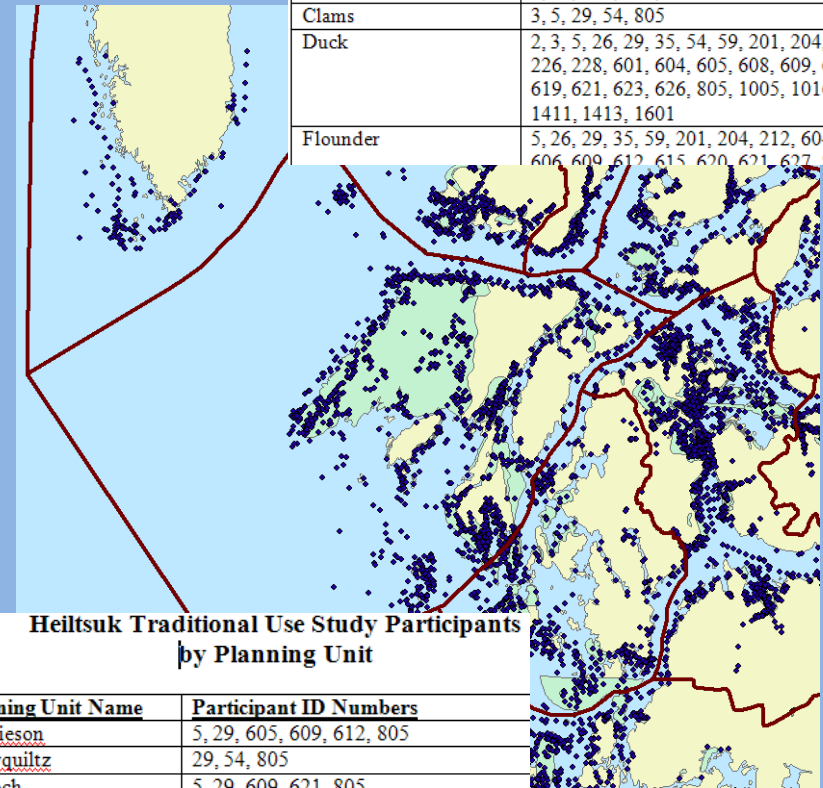
gÇ3ios3ymi6 kNø5 wMs[c3iq8k5F
cspQx3[siq8kl

Use as Focus for Community Engagement/Consultation



Identify Community Experts

- Who are key community members who are familiar with particular areas?
- Helps to use UO data as means to get qualitative input from community members



**Heiltsuk Traditional Use Study Participant
by Feature Type**

Feature Type	Participant ID Numbers
Abalone	5, 54, 604, 619, 621
Clams	3, 5, 29, 54, 805
Duck	2, 3, 5, 26, 29, 35, 54, 59, 201, 204, 226, 228, 601, 604, 605, 608, 609, 619, 621, 623, 626, 805, 1005, 1016, 1411, 1413, 1601
Flounder	5, 26, 29, 35, 59, 201, 204, 212, 604, 606, 609, 612, 615, 620, 621, 627, 805

**Heiltsuk Traditional Use Study Participants
by Planning Unit**

Planning Unit Name	Participant ID Numbers
Mathieson	5, 29, 605, 609, 612, 805
Scowquiltz	29, 54, 805
Kynoch	5, 29, 609, 621, 805
Roderick	5, 29, 59, 212, 605, 609, 612, 621, 801, 1003, 1005, 1011, 1403, 1601
Nascall	5, 29, 54, 805, 1031
Ingram	29, 626
Spiller	5, 29, 35, 609, 612, 621, 801
Cousins	2, 3, 26, 29, 35, 54, 59, 201, 204, 209, 228, 604, 605, 606, 609, 615, 619, 623, 805, 1005, 1010, 1011, 1016, 1018, 1019, 1411

Source: Heiltsuk First Nation

Follow up discussion or questions:
Stephen Kilburn, skilburn@geopraxis.ca

519-835-3181

