

Government of Nunavut

- A public government responsible for the administration of the territory of Nunavut
- Has shared jurisdiction for the lands and waters in the Nunavik Marine Region, with the federal government, the Cree Nation Government, Makivvik and Québec
- A signatory to the Nunavik Inuit Land Claims Agreement (Nunavik Agreement)
- The Minister of Environment is the territorial Minister responsible for the approval of a land use plan



Government of Nunavut – Land Use Planning

The GN's role includes:

- Nominating one member to the Nunavik Marine Region Planning Commission (Commission)
- Working with the Commission so they can establish broad planning policies, objectives and goals for the Nunavik Marine Region
- Participating in the process and providing input on draft plan in accordance with the GN's mandate and jurisdictional interests
- Making a decision on a draft plan prepared by the Commission
- Supporting implementing an approved plan, according to GN's mandate



Department of Environment – Mandate

Responsible for:

- Leading the Government of Nunavut's participation in land use planning
- Leading the Government of Nunavut's responsibilities for wildlife and habitat management in Nunavut
- Coordinating Government of Nunavut's review of projects for environmental and human health impacts
- Establishment and operation of territorial parks and special places
- Leading the Government of Nunavut's response to protected areas
- Addressing climate change through adaptation, mitigation and knowledge mobilization

Applicable legislation and provisions of NILCA:

- *Nunavik Inuit Land Claims Agreement (Primarily Articles 5,6,7,11)*
- *Wildlife Act*
- *Territorial Parks Act*
- *Environmental Protection Act*



Key Permits, Licenses or Authorizations

- **Wildlife Observation License:** Establish, offer or provide organized activity in which wildlife is the object of interaction, manipulation or close observation, including making of a film or the provisions of an expedition, safari or cruise.
- **Wildlife Research Permit:** Needed to conduct research on wildlife or collect wildlife specimens for research.
- Contact Info:
 - Wildlife_research@gov.nu.ca for wildlife research permits.
 - wildlife_observation@gov.nu.ca for wildlife observation licences.
 - Landuseplanning@gov.nu.ca for land use planning inquiries.



Department of Executive and Intergovernmental Affairs – Mandate

- As a signatory to the Nunavik Agreement and a party to the Nunavik Agreement Implementation Plan, an official from Executive and Intergovernmental Affairs is a member of the tripartite Implementation Committee and participates in the Committee's mandate to:
 - Oversee and provide direction on the implementation of the Nunavik Agreement
 - Monitor the Implementation Plan
 - Revise activities, reallocate resources and amend the Plan when necessary
 - Attempt to resolve disputes
 - Contribute to the bi-annual report on implementation activities
 - Plan for subsequent planning periods



Department of Community Services – Mandate

- Support local governments and communities to lead their own development.
- Strengthen operations of Nunavut municipalities, local governance, and land use planning.
- Enable sustainable economic development, including tourism, fisheries, mining, and local business growth.
- Deliver grants, contributions, and community-based training that build long-term local capacity of Nunavut communities.
- Provide territorial public services such as licensing, consumer protection, motor vehicles, sport and recreation, arts and culture, and business support through Service Nunavut.
- Coordinate emergency management and search and rescue services in Nunavut.
- Promote Inuit participation in procurement through implementation of the Nunavummi Nangminiqaqtunik Ikajuuti (NNI) Act.
- Work collaboratively with Nunavut municipalities, Inuit organizations, and territorial partners to align priorities and funding.



Key Permits, Licenses or Authorizations

Outfitter's Licence

- Required to operate as an outfitter providing guided outdoor recreational activities (e.g., hunting, fishing, canoeing, camping, guided tours, Cruise Ships) to paying clients.
- Issued under the *Tourism Act* and its regulations.
- Typically renewed annually, and liability insurance of a specified minimum amount is required.

Tourist Establishment Licence

- Required for businesses offering tourist accommodations outside of municipal boundaries — such as lodges, outpost camps, cabins and campgrounds.
- Regulated under the *Tourist Accommodation Regulations*.
- Businesses must usually provide proof of land authority/lease, building compliance, insurance, and other documentation.

Contact:

Tourism@gov.nu.ca

CruiseNunavut@gov.nu.ca



Department of Culture and Heritage – Mandate

Mandate:

- Administer the archaeology and palaeontology permitting system for Nunavut in collaboration with our Land Claim partners.
- Protect, manage, and conserve archaeological and palaeontological resources (sites, artifacts, and fossils).
- Develop policies, technical standards, and guidelines for heritage resource management.

Applicable Legislation & Agreements:

- *Nunavut Act* (federal)
- *Nunavut Archaeological and Palaeontological Sites Regulations*
- *Nunavik Inuit Land Claims Agreement - Article 20 (Archaeology) & Implementation Plan*: Establishes the permitting system, consultation protocols, protection of sites, and ownership of specimens within the Nunavik Marine Region.



Archaeology and Paleontology Permitting

Permits Issued:

- **Nunavut Archaeologist Permit**
- **Nunavut Palaeontologist Permit**

Permit Classes:

- **Class 1:** Survey, visitation, and documentation only (Non-intervention / "Look but don't touch").
- **Class 2:** Excavation, collection, and alteration of sites (Requires professional qualifications).

Activities Requiring Authorization:

- **Heritage Site Visitation:** Tourism activities, including cruise ship landings at archaeological sites and outfitter guided tours.
- **Development Projects:** Activities involving ground disturbance (e.g., mining, municipal infrastructure, quarries/pits).
- **Research & Education:** Academic or scientific field studies, as well as land-based educational programming involving visits to/documentation of heritage sites.
- **Deadline: March 31st** (Critical for regulatory sequencing).

Contact Info:

- **Permit Applications:** CHPermits@gov.nu.ca
- **General Inquiries:** CHArchaeologyProgram@gov.nu.ca
- **Website:** www.gov.nu.ca/en/culture-language-heritage-and-art/heritage-resources



Nunavut Arctic College: Responsible for Administering Nunavut's *Scientists Act*

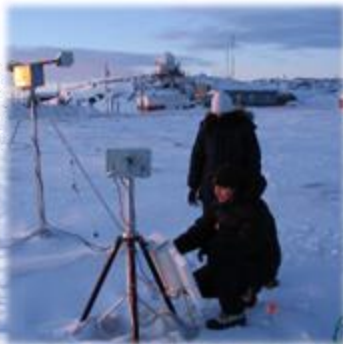
Nunavut's *Scientists Act*:

- Required for research in health, social, natural sciences (People, Land, Water, and Air)
- Administered by Nunavut Arctic College on behalf of the responsible Minister
- Purpose/Intent:
 - Protect Nunavummiut and the environment from harm and interference
 - Track and coordinate research activities
 - Retain information generated from research in Nunavut

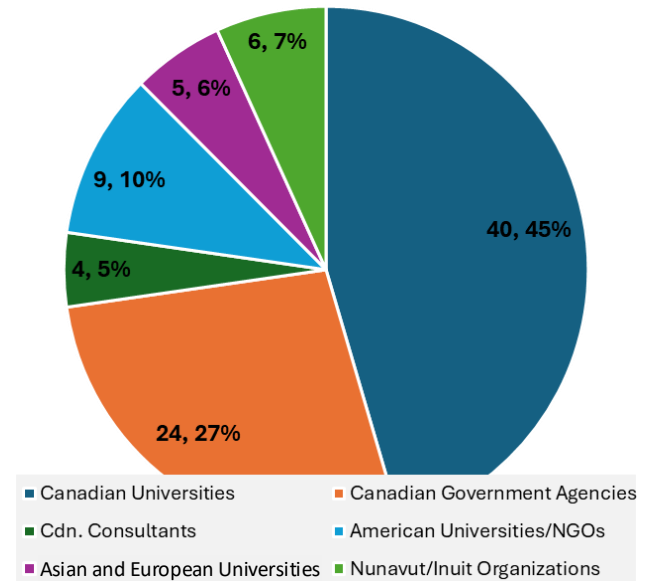


Marine Research: Examples of Licensable Studies

- Marine geology and geophysics
- Physical Oceanography and Sea ice science
- Coastal Habitat studies processes
- Cryosphere-Ocean systems
- Marine meteorology and climate science
- Marine technology



Principal Investigator Affiliation: 2023
Physical/Natural Science Projects



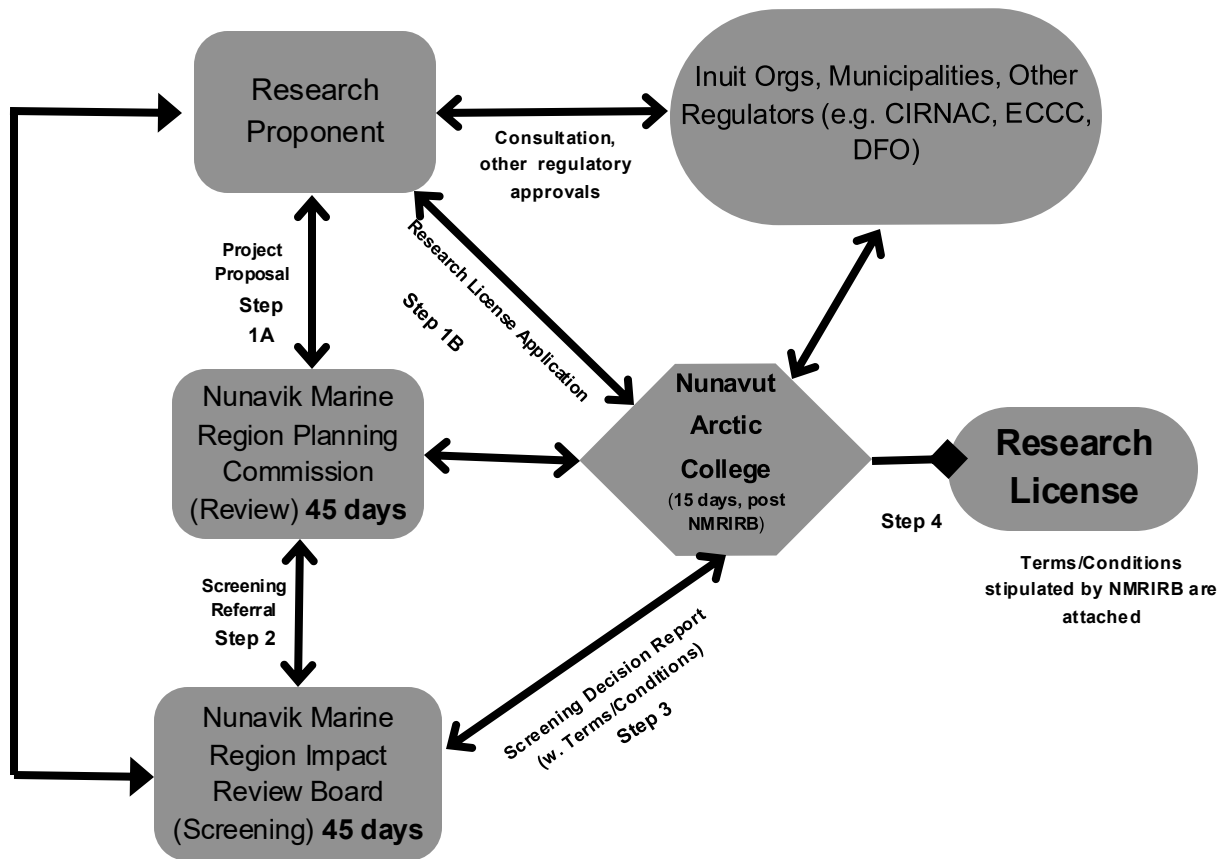
When is an NRI research license *not* required?

- Licensing is generally NOT required* for:
 - Program evaluations, quality improvement studies, audits, needs assessments, feasibility studies
 - Routine, ongoing, operational scientific programs and surveys
 - Weather/Hydrometric station operation
 - Hydrographic surveys
 - Geotechnical/Engineering studies for construction
 - Environmental contamination assessment, remediation studies
 - Water quality/effluent monitoring (for regulatory compliance)
 - Adventure Tourism
 - Scientific Field Schools
 - Mineral Prospecting and Exploration

***Licensing for the above may be required depending on scientific scope, research objectives, and academic involvement!**

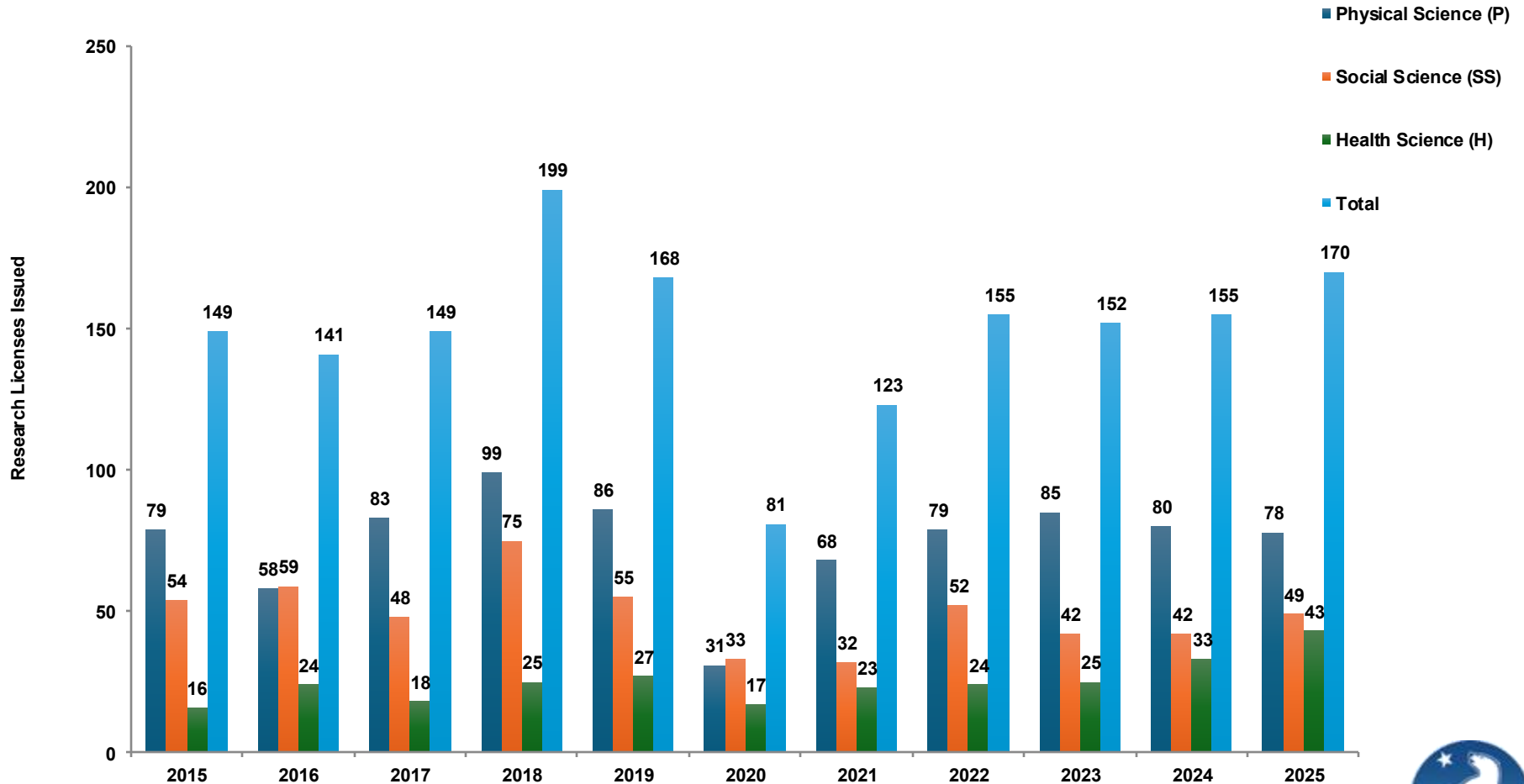


NRI Research Licensing Process and Timelines in the Nunavik Marine Region



Scientist Act allows up to 1 full year to review a license application!

Nunavut Scientific Research Licenses: 2019-2025



For more information

Jamal Shirley

Director, Innovation and Research
Nunavut Research Institute
Nunavut Arctic College
Jamal.shirley@arcticcollege.ca

Mosha Cote

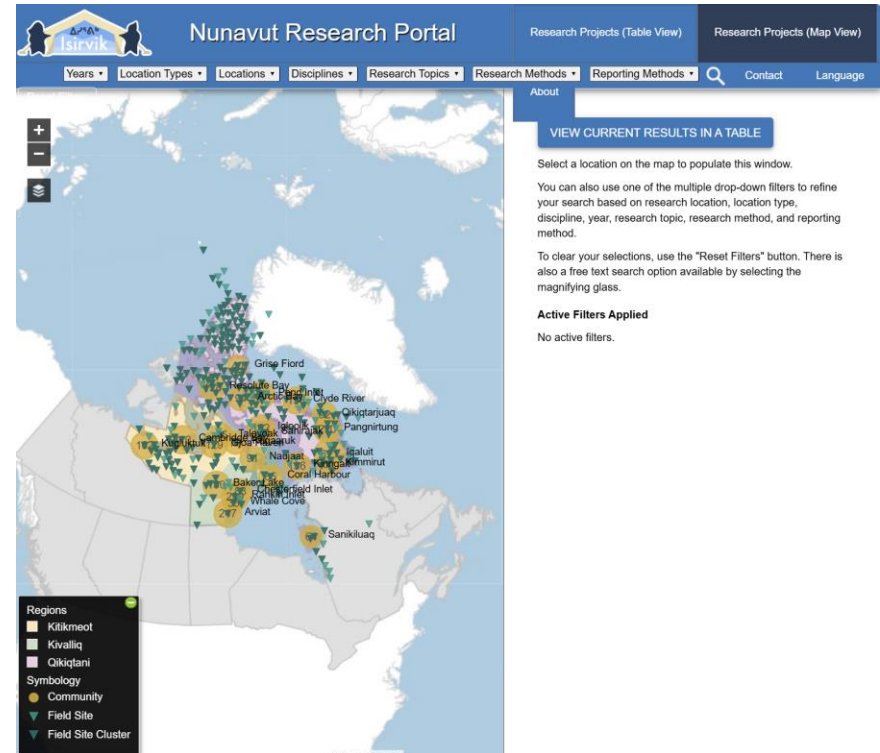
Manager, Research Liaison
Nunavut Research Institute
Nunavut Arctic College
Mosha.cote@arcticcollege.ca

www.isirvik.ca

Searchable online portal for
projects licensed by the NRI

www.nri.nu.ca

Research application guidelines,
annual research compendiums,
application submission portal



Key Messages

- The Government of Nunavut:
 - Is a signatory to the Nunavik Agreement
 - Participates in the planning process
 - Is one of the jurisdictions that eventually makes a decision on the plan
 - Issues various permits, licences and authorizations in the Nunavik Marine Region



ᓇᓂᓴᓂ!
Koana!
Merci!
Thank you!

